

# HPLC Application

ID No.: 20594

## Pain Panel Mix-41 in Human Urine on Luna 3u, PFP(2), 50x3 by LC-MS/MS

**Column:** Luna® 3 µm PFP(2) 100 Å, LC Column 50 x 3 mm, Ea

**Dimensions:** 50 x 3 mm ID

**Order No:** 00B-4447-Y0

**Elution Type:** Gradient

**Eluent A:** 10 mM Ammonium formate

**Eluent B:** Methanol

Gradient Profile:	Step No.	Time (min)	Pct A	Pct B
	1	0	95	5
	2	5.5	5	95
	3	7	5	95
	4	7.1	95	5
	5	9	95	5

**Flow Rate:** 500 µL/min

**Col. Temp.:** 40 °C

**Detection:** Mass Spectrometer (MS) @ amu (ambient)

**Detector Info:** <a target="\_blank"

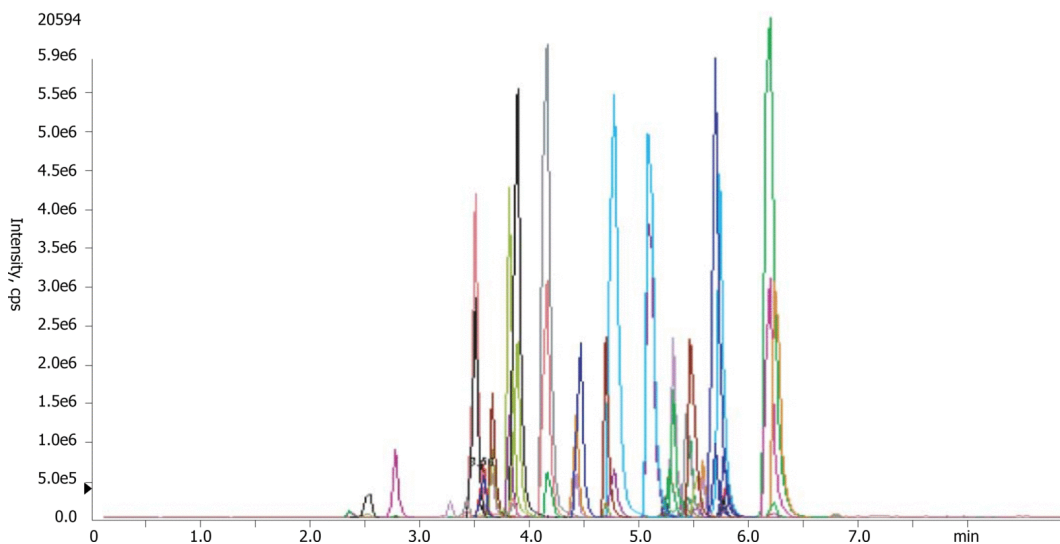
**Analyst Note:** href="https://sciex.com/products/mass-spectrometers?utm\_campaign=2019%20application%20search&utm\_source=phenomenex&utm\_medium=referral">SCIEX<br/>SecurityGuard™ Guard Cartridge System extends column lifetime.

- SecurityGuard Cartridges, PFP 4 x 2.0mm ID, 10/Pk Part No.: AJ0-8326

- Holder Part No.: KJ0-4282



Products used in this application:



## Pain Panel Mix-41 in Human Urine on Luna 3u, PFP(2), 50x3 by LC-MS/MS

### ANALYTES:

- |                                   |                         |
|-----------------------------------|-------------------------|
| <b>1</b> Morphine                 | <b>41</b> Buprenorphine |
| <b>2</b> Oxymorphone              |                         |
| <b>3</b> Hydromorphone            |                         |
| <b>4</b> Codeine                  |                         |
| <b>5</b> Oxycodone                |                         |
| <b>6</b> Amphetamine              |                         |
| <b>7</b> Naltrexone               |                         |
| <b>8</b> 6-MAM                    |                         |
| <b>9</b> Hydrocodone              |                         |
| <b>10</b> Methamphetamine         |                         |
| <b>11</b> MDA                     |                         |
| <b>12</b> Benzoylcegonine         |                         |
| <b>13</b> Naloxone                |                         |
| <b>14</b> MDMA                    |                         |
| <b>15</b> MDEA                    |                         |
| <b>16</b> Norfentanyl             |                         |
| <b>17</b> Meprobamate             |                         |
| <b>18</b> Tramadol                |                         |
| <b>19</b> Normeperidine           |                         |
| <b>20</b> Meperidine              |                         |
| <b>21</b> PCP                     |                         |
| <b>22</b> alpha-Hydroxyalprazolam |                         |
| <b>23</b> Lorazepam               |                         |
| <b>24</b> Norbuprenorphine        |                         |
| <b>25</b> Oxazepam                |                         |
| <b>26</b> Carisoprodol            |                         |
| <b>27</b> Clonazepam              |                         |
| <b>28</b> EDDP                    |                         |
| <b>29</b> Alprazolam              |                         |
| <b>30</b> Temazepam               |                         |
| <b>31</b> Flunitrazepam           |                         |
| <b>32</b> Nordiazepam             |                         |
| <b>33</b> Norpropoxyphene         |                         |
| <b>34</b> Flurazepam              |                         |
| <b>35</b> Fentanyl                |                         |
| <b>36</b> Midazolam               |                         |
| <b>37</b> Diazepam                |                         |
| <b>38</b> Methadone               |                         |
| <b>39</b> Sufentanil              |                         |
| <b>40</b> Propoxyphene            |                         |

