

## Yarra 3µm SEC-3000 Column Priming Example Ig-G + BSA

**Column:** Yarra™ 3 µm SEC-3000, LC Column 300 x 7.8 mm, Ea

**Dimensions:** 300 x 7.8 mm ID

**Order No:** 00H-4513-K0

**Elution Type:** Isocratic

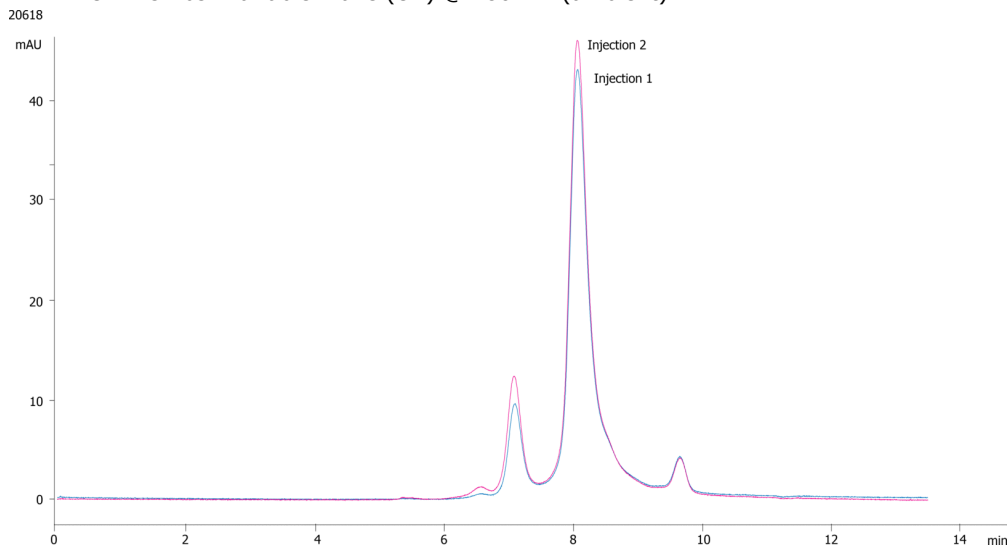
**Eluent A:** 50 mm NaPO4 pH 5.0/0.1M Na2SO4

Gradient Profile:	Step No.	Time (min)	Pct A
	1	0	100

**Flow Rate:** 1 mL/min

**Col. Temp.:** ambient

**Detection:** UV-Vis Abs.-Variable Wave.(UV) @ 280 nm (ambient)



### ANALYTES:

- 1** IgG dimer  
Retention Time: 7 min
- 2** IgG monomer  
Retention Time: 8.2 min
- 3** Albumin  
Retention Time: 9.7 min



Products used in this application:

