

## Yarra 3µm SEC-3000 3 batch overlay PMQC Conditions

**Column:** Yarra™ 3 µm SEC-3000, LC Column 300 x 7.8 mm, Ea

**Dimensions:** 300 x 7.8 mm ID

**Order No:** 00H-4513-K0

**Elution Type:** Isocratic

**Eluent A:** 100 mm PO4 Buffer pH 6.8 100 mm Sodium Phosphate in Water pH 6.8 with 0.025% NaH<sub>2</sub>PO<sub>4</sub>

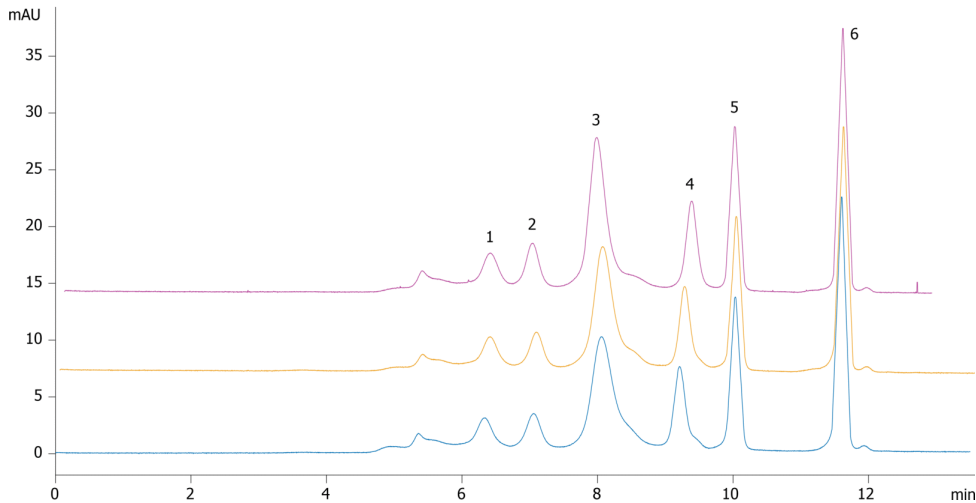
| Gradient Profile: | Step No. | Time (min) | Pct A |
|-------------------|----------|------------|-------|
|                   | 1        | 0          | 100   |

**Flow Rate:** 1 mL/min

**Col. Temp.:** ambient

**Detection:** UV-Vis Abs.-Variable Wave.(UV) @ 280 nm (ambient)

20632



### ANALYTES:

- 1** Thyroglobulin  
Retention Time: 6.4 min
- 2** IgA  
Retention Time: 7 min
- 3** IgG  
Retention Time: 8 min
- 4** Ovalbumin  
Retention Time: 9.2 min
- 5** Myoglobin  
Retention Time: 10 min
- 6** Uridine  
Retention Time: 11.5 min



Products used in this application:

