

Yarra 3µm SEC-3000 High Salt Loading Study: Albumin and Ig-G

Column: Yarra™ 3 µm SEC-3000, LC Column 300 x 7.8 mm, Ea
Dimensions: 300 x 7.8 mm ID
Order No: 00H-4513-K0
Elution Type: Isocratic
Eluent A: 50 mM Sodium Phosphate pH 6.8/ 0.3M Sodium Chloride
Gradient

Step No.	Time (min)	Pct A
1	0	100

Flow Rate: 1 mL/min
Col. Temp.: ambient
Detection: UV-Vis Abs.-Variable Wave.(UV) @ 214 nm (ambient)
Analyst Note: Different concentrations of loading:

Injection amount: 20uL

0.5mg/mL-10ug

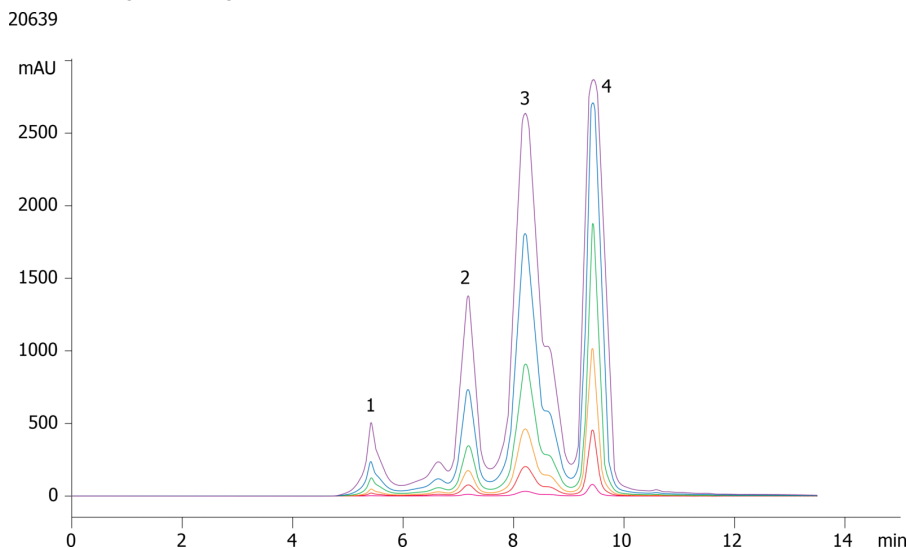
2.5mg/mL-50ug

5mg/mL-100ug

10mg/mL-200ug

25mg/mL-500ug

50mg/mL-1000ug



ANALYTES:

- 1 IgM
Retention Time: 5.4 min
- 2 IgG dimer
Retention Time: 7.2 min
- 3 IgG
Retention Time: 8.2 min
- 4 Albumin
Retention Time: 9.2 min



Products used in this application:

