

# HPLC Application

ID No.: 20643

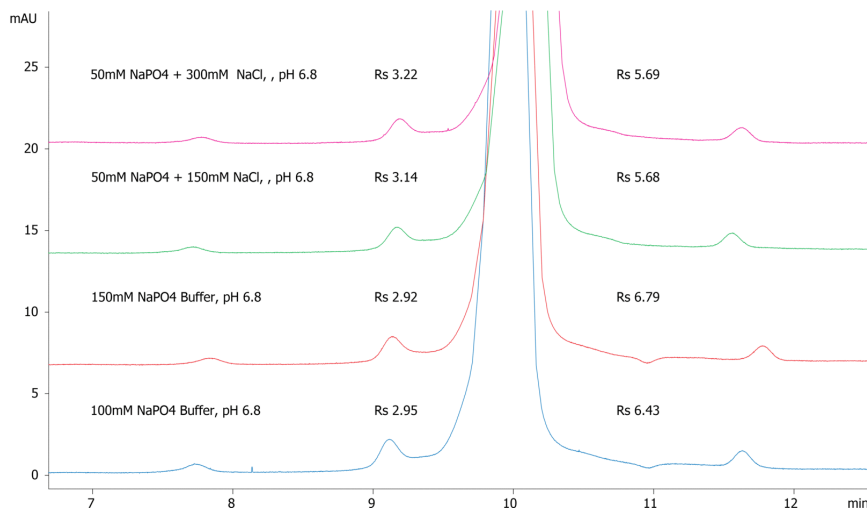
## Yarra 3µm SEC-2000 Different Salt Concentrations IGF-1

**Column:** Yarra™ 3 µm SEC-2000, LC Column 300 x 7.8 mm, Ea  
**Dimensions:** 300 x 7.8 mm ID  
**Order No:** 00H-4512-K0  
**Elution Type:** Isocratic  
**Eluent A:** 50 mM Sodium Phosphate pH 6.8 / 0.3 M Sodium Chloride  
**Gradient**  

Step No.	Time (min)	Pct A
1	0	100

  
**Flow Rate:** 1 mL/min  
**Col. Temp.:** ambient  
**Detection:** UV-Vis Abs.-Variable Wave.(UV) @ 220 nm (ambient)

20643



### ANALYTES:

1 IGF-1

Retention Time: 9.9 min



Products used in this application:

