

# HPLC Application

ID No.: 20654

## Estriol by LCMS using Gemini 3um C6-Phenyl 50x2mm

**Column:** Gemini<sup>®</sup> 3  $\mu$ m C6-Phenyl 110 Å, LC Column 50 x 2 mm, Ea

**Dimensions:** 50 x 2 mm ID

**Order No:** 00B-4443-B0

**Elution Type:** Gradient

**Eluent A:** H<sub>2</sub>O + 0.5 mM ammonium hydroxide

**Eluent B:** MeOH + 0.5 mM ammonium hydroxide

Gradient Profile:	Step No.	Time (min)	Pct A	Pct B
	1	0	80	20
	2	0.5	80	20
	3	3.5	10	90
	4	5	10	90
	5	5.1	80	20
	6	6	80	20

**Flow Rate:** 0.5 mL/min

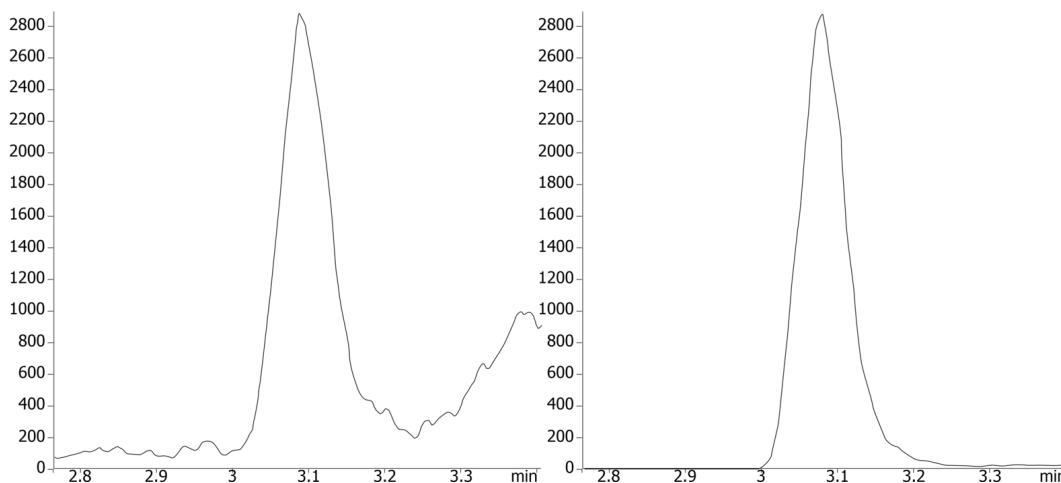
**Col. Temp.:** ambient

**Detection:** Tandem Mass Spec (MS-MS) @ (ambient)

**Detector Info:**

20654

[https://sciex.com/products/mass-spectrometers?utm\\_campaign=2019%20application%20search&utm\\_source=phenomenex&utm\\_medium=referral](https://sciex.com/products/mass-spectrometers?utm_campaign=2019%20application%20search&utm_source=phenomenex&utm_medium=referral)>SCIE<



### ANALYTES:

1 Estriol

Retention Time: 3.08 min

2 Estriol-d3

Retention Time: 3.08 min

