

# HPLC Application

ID No.: 20655

## Steroid panel by LCMS using Kinetex 2.6u C18 100x3.0mm

**Column:** Kinetex® 2.6 µm C18 100 Å, LC Column 100 x 3 mm, Ea

**Dimensions:** 100 x 3 mm ID

**Order No:** 00D-4462-Y0

**Elution Type:** Gradient

**Eluent A:** Water

**Eluent B:** Methanol

Gradient Profile:	Step No.	Time (min)	Pct A	Pct B
	1	0	90	10
	2	2	90	10
	3	3	60	40
	4	7	30	70
	5	10	20	80
	6	10.2	5	95
	7	13	5	95
	8	13.2	90	10
	9	16	90	10

**Flow Rate:** 0.55 mL/min

**Col. Temp.:** ambient

**Detection:** Tandem Mass Spec (MS-MS) @ (ambient)

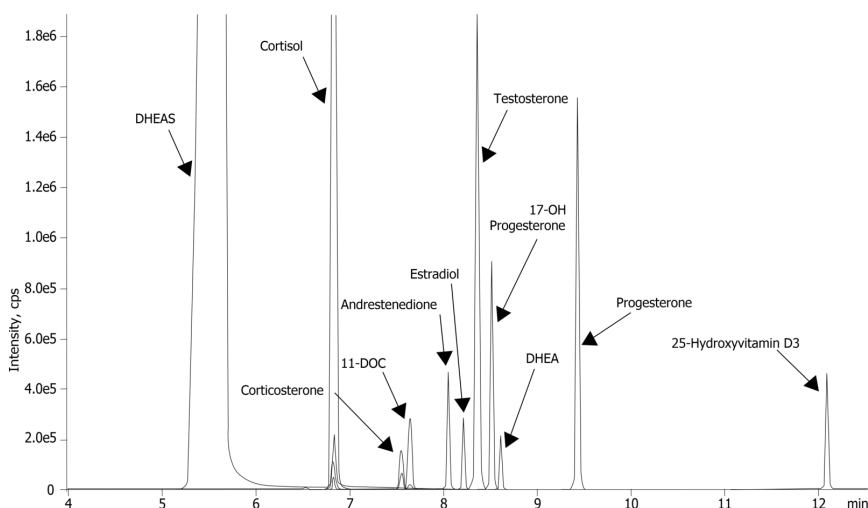
**Detector Info:**

20655

<a target="\_blank" href="https://sciex.com/products/mass-spectrometers?utm\_campaign=2019%20application%20search&utm\_source=phenomenex&utm\_medium=referral">SCIEX</a>



Products used in this application:



## Steroid panel by LCMS using Kinetex 2.6u C18 100x3.0mm

### ANALYTES:

- 1 DHEAS
- 2 Cortisol
- 3 Corticosterone
- 4 11-DOC (11-Deoxycortisol)
- 5 Androstenedione
- 6 Estradiol
- 7 Testosterone
- 8 17-Hydroxyprogesterone
- 9 DHEA
- 10 Progesterone
- 11 25 Hydroxy vitamin D3

