

## Immunosuppressants by LCMS using Luna 5um Phenyl-Hexyl 50x2.1mm

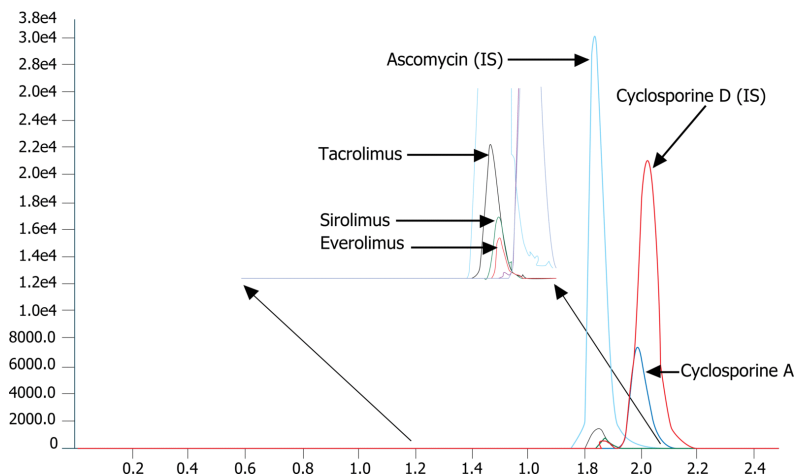
**Column:** Luna® 5 µm Phenyl-Hexyl 100 Å, LC Column 50 x 2 mm, Ea  
**Dimensions:** 50 x 2 mm ID  
**Order No:** 00B-4257-B0  
**Elution Type:** Isocratic  
**Eluent A:** 97% methanol + 0.3 mM ammonium acetate + 0.003% acetic acid  
**Gradient**  

Step No.	Time (min)	Pct A
1	0	100

  
**Flow Rate:** 0.5 mL/min  
**Col. Temp.:** ambient  
**Detection:** Tandem Mass Spec (MS-MS) @ (ambient)  
**Detector Info:** <a target="\_blank" href="https://sciex.com/products/mass-spectrometers?utm\_campaign=2019%20application%20search&utm\_source=phenomenex&utm\_medium=referral">SCIEX</a>  
20688



Products used in this application:



### ANALYTES:

- 1 Everolimus  
Retention Time: 1.87 min
- 2 Sirolimus  
Retention Time: 1.86 min
- 3 Tacrolimus  
Retention Time: 1.83 min
- 4 Ascomycin  
Retention Time: 1.83 min
- 5 Cyclosporin D  
Retention Time: 2.02 min

