

HPLC Application

ID No.: 20689

Pain Panel/Drug Screening by LCMS using Kinetex 2.6u C18 50x3.0mm

Column: Kinetex® 2.6 µm C18 100 Å, LC Column 50 x 3 mm, Ea

Dimensions: 50 x 3 mm ID

Order No: 00B-4462-Y0

Elution Type: Gradient

Eluent A: 10mM ammonium formate (no pH adjustment)

Eluent B: Methanol with 0.1% formic acid

Gradient Profile:	Step No.	Time (min)	Pct A	Pct B
	1	0	95	5
	2	3	0	100
	3	4	0	100
	4	4.1	95	5
	5	5	95	5

Flow Rate: 0.5 mL/min

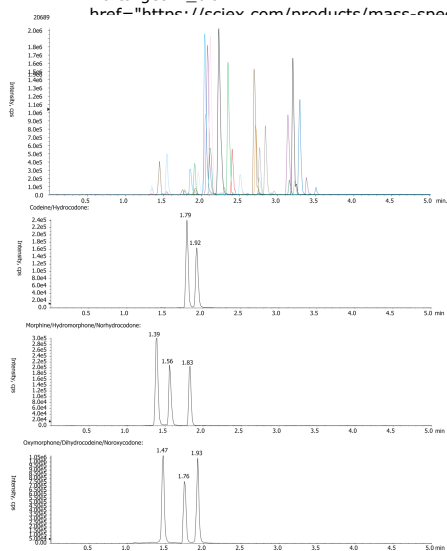
Col. Temp.: ambient

Detection: Tandem Mass Spec (MS-MS) @ (ambient)

Detector Info: SCIEX<



Products used in this application:



Pain Panel/Drug Screening by LCMS using Kinetex 2.6u C18 50x3.0mm

ANALYTES:

- | | |
|-----------------------------------|-----------------------|
| 1 Morphine | 41 Nordiazepam |
| 2 Oxymorphone | |
| 3 Hydromorphone | |
| 4 Dihydrocodeine | |
| 5 Codeine | |
| 6 Diazepam | |
| 7 Norhydrocodone | |
| 8 Oxycodone | |
| 9 Hydrocodone | |
| 10 Noroxycodone | |
| 11 Methylone | |
| 12 6-MAM | |
| 13 Amphetamine | |
| 14 BZP | |
| 15 MDA | |
| 16 MDMA | |
| 17 MDEA | |
| 18 Mephedrone | |
| 19 Benzoylcegonine | |
| 20 Norfentanyl | |
| 21 Zopiclone | |
| 22 Tramadol | |
| 23 mCPP | |
| 24 Meperidine | |
| 25 MDPV | |
| 26 Normeperidine | |
| 27 PCP | |
| 28 BZP | |
| 29 Norbuprenorphine | |
| 30 Fentanyl | |
| 31 Meprobamate | |
| 32 EDDP | |
| 33 Zaleplon | |
| 34 Buprenorphine | |
| 35 Methadone | |
| 36 alpha-Hydroxyalprazolam | |
| 37 Carisoprodol | |
| 38 Lorazepam | |
| 39 Oxazepam | |
| 40 Temazepam | |

