

HPLC Application

ID No.: 20738

KNX 5 Brochure - Pharma mix analysis using Kinetex 5um C18 150x4.6mm

Column: Kinetex[®] 5 μ m C18 100 Å, LC Column 150 x 4.6 mm, Ea

Dimensions: 150 x 4.6 mm ID

Order No: 00F-4601-E0

Elution Type: Gradient

Eluent A: Water with 0.1% TFA

Eluent B: Acetonitrile with 0.1% TFA

Gradient Profile:	Step No.	Time (min)	Pct A	Pct B
	1	0	95	5
	2	15	5	95

Flow Rate: 1.2 mL/min

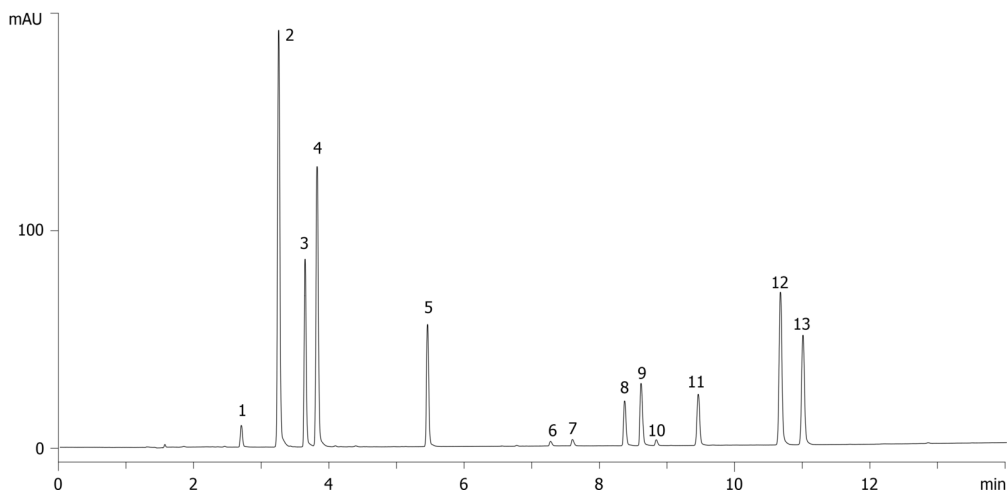
Col. Temp.: ambient

Detection: UV-Vis Abs.-Variable Wave.(UV) @ 254 nm (ambient)

20738



Products used in this application:



KNX 5 Brochure - Pharma mix analysis using Kinetex 5um C18 150x4.6mm

ANALYTES:

- 1 Procainamide
- 2 Acetaminophen
- 3 Folic acid
- 4 Sulfathiazole
- 5 Acebutolol
- 6 Dextromethorphan
- 7 Diphenhydramine
- 8 Propafenone
- 9 Amitriptyline
- 10 Fluoxetine
- 11 Naproxen
- 12 Diflunisal
- 13 Indomethacin

