

# HPLC Application

ID No.: 20739

## Bath Salts analysis using Kinetex 2.6u C18 50x3.0mm

**Column:** Kinetex® 2.6 µm C18 100 Å, LC Column 50 x 3 mm, Ea

**Dimensions:** 50 x 3 mm ID

**Order No:** 00B-4462-Y0

**Elution Type:** Gradient

**Eluent A:** 10mM Ammonium Formate

**Eluent B:** Methanol with 0.1% Formic acid

Gradient Profile:	Step No.	Time (min)	Pct A	Pct B
	1	0	95	5
	2	3	0	100
	3	4	0	100
	4	4.1	95	5

**Flow Rate:** 500 µL/min

**Col. Temp.:** ambient

**Detection:** Tandem Mass Spec (MS-MS) @ (ambient)

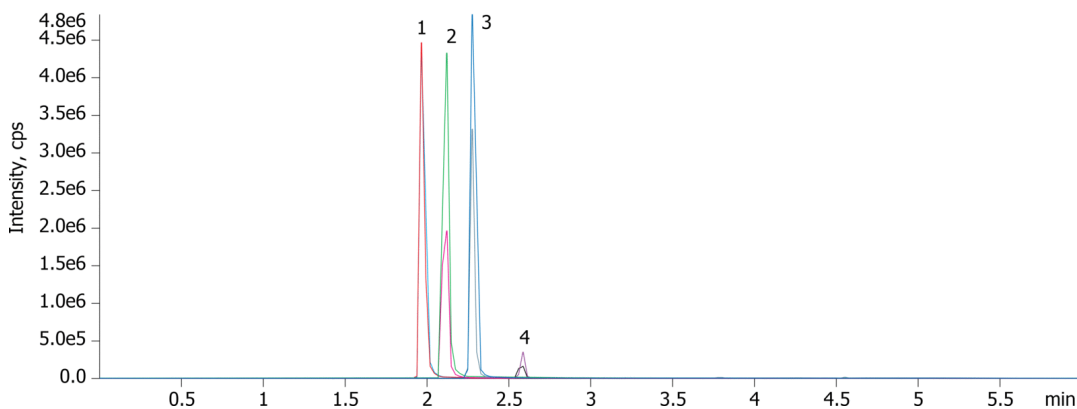
**Detector Info:** <a target="\_blank"

20739

href="https://sciex.com/products/mass-spectrometers?utm\_campaign=2019%20application%20search&utm\_source=phenomenex&utm\_medium=referral">SCIEX<



Products used in this application:



### ANALYTES:

- 1** Methamphetamine  
Retention Time: 1.12 min
- 2** Methylone  
Retention Time: 1.97 min
- 3** Mephedrone  
Retention Time: 2.28 min
- 4** MDPV  
Retention Time: 2.69 min

