

# HPLC Application

ID No.: 20742

## Synthetic Cannabinoids Metabolites - LC/MS - Luna 3µm C18

**Column:** Luna® 3 µm C18(2) 100 Å, LC Column 150 x 3 mm, Ea

**Dimensions:** 150 x 3 mm ID

**Order No:** 00F-4251-Y0

**Elution Type:** Gradient

**Eluent A:** 10mM Ammonium Acetate

**Eluent B:** Acetonitrile

Gradient Profile:	Step No.	Time (min)	Pct A	Pct B
	1	0	55	45
	2	10	48	52
	3	11	5	95
	4	12	5	95

**Flow Rate:** 700 µL/min

**Col. Temp.:** ambient

**Detection:** Tandem Mass Spec (MS-MS) @ (500 °C)

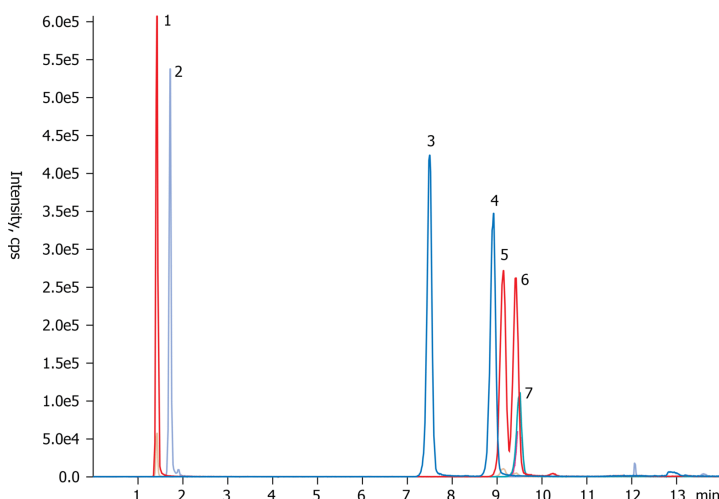
**Detector Info:** <a target="\_blank"

20742

href="https://sciex.com/products/mass-spectrometers?utm\_campaign=2019%20application%20search&utm\_source=phenomenex&utm\_medium=referral">SCIEX<



Products used in this application:



### ANALYTES:

- 1 JWH-073-Butanoic acid metabolite  
Retention Time: 1.42 min
- 2 JWH-018-Pentanoic acid metabolite  
Retention Time: 1.72 min
- 3 JWH-073-4-Hydroxybutyl metabolite  
Retention Time: 7.5 min
- 4 JWH-073-3-Hydroxybutyl metabolite  
Retention Time: 8.92 min
- 5 JWH-018-5-Hydroxypentyl metabolite  
Retention Time: 9.14 min
- 6 JWH-018-4-Hydroxypentyl metabolite  
Retention Time: 9.41 min
- 7 AM-2201-4-Hydroxypentyl metabolite  
Retention Time: 9.5 min

