

Synthetic Cannabinoids Metabolites - LC/MS -KNX 2.6um C18

Column: Kinetex® 2.6 µm C18 100 Å, LC Column 150 x 3 mm, Ea

Dimensions: 150 x 3 mm ID

Order No: 00F-4462-Y0

Elution Type: Gradient

Eluent A: 10mM Ammonium Acetate

Eluent B: Acetonitrile

Gradient Profile:	Step No.	Time (min)	Pct A	Pct B
	1	0	55	45
	2	7	50	50
	3	8	5	95
	4	9	5	95

Flow Rate: 600 µL/min

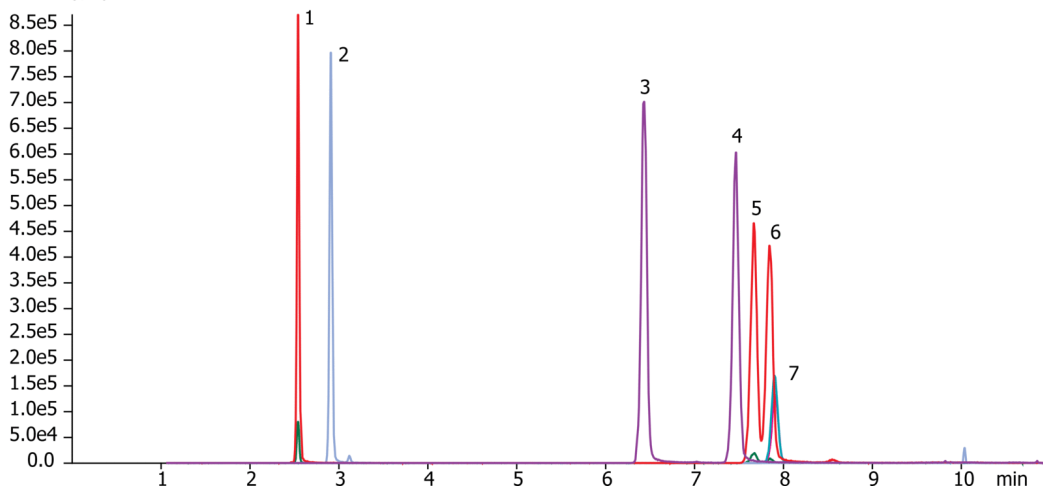
Col. Temp.: ambient

Detection: Tandem Mass Spec (MS-MS) @ (500 °C)

Detector Info: SCIEX<

20743

Intensity, cps



ANALYTES:

- 1** JWH-073-Butanoic acid metabolite
Retention Time: 1.48 min
- 2** JWH-018-Pentanoic acid metabolite
Retention Time: 1.85 min
- 3** JWH-073-4-Hydroxybutyl metabolite
Retention Time: 5.37 min
- 4** JWH-073-3-Hydroxybutyl metabolite
Retention Time: 6.41 min
- 5** JWH-018-5-Hydroxypentyl metabolite
Retention Time: 6.61 min
- 6** JWH-018-4-Hydroxypentyl metabolite
Retention Time: 6.8 min
- 7** AM-2201-4-Hydroxypentyl metabolite
Retention Time: 6.84 min



Products used in this application:

