

Yarra 3µm SEC-3000 AcCN gradient wash Ig-G + BSA before and after overlay

Column: Yarra™ 3 µm SEC-3000, LC Column 300 x 7.8 mm, Ea

Dimensions: 300 x 7.8 mm ID

Order No: 00H-4513-K0

Elution Type: Isocratic

Eluent A: 100 mM NaPO4 pH 6.8

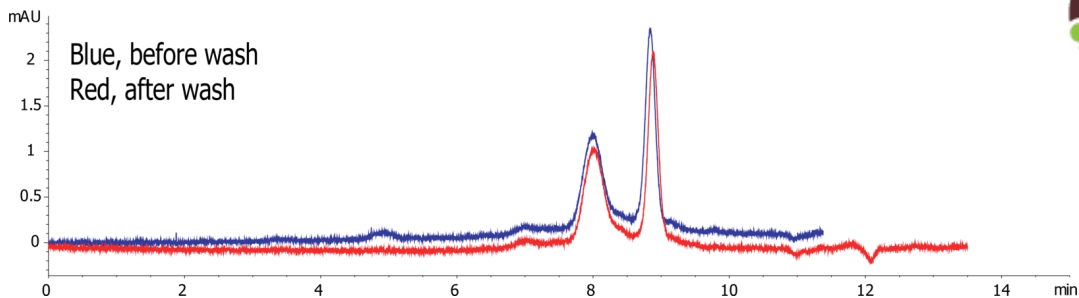
Gradient Profile:	Step No.	Time (min)	Pct A
	1	0	100

Flow Rate: 1 mL/min

Col. Temp.: ambient

Detection: UV-Vis Abs.-Variable Wave.(UV) @ 280 nm (ambient)

20744



Products used in this application:



ANALYTES:

1 IgG monomer

Retention Time: 8 min

2 Albumin

Retention Time: 8.9 min

