

HPLC Application

ID No.: 20788

Yarra 3µm SEC-2000 Zoom in MP Comparison: Ig-G + BSA

Column: Yarra™ 3 µm SEC-2000, LC Column 300 x 7.8 mm, Ea

Dimensions: 300 x 7.8 mm ID

Order No: 00H-4512-K0

Elution Type: Isocratic

Eluent A: xx Sodium Phosphate pH 6.8 see figure for details

Gradient Profile:	Step No.	Time (min)	Pct A
	1	0	100

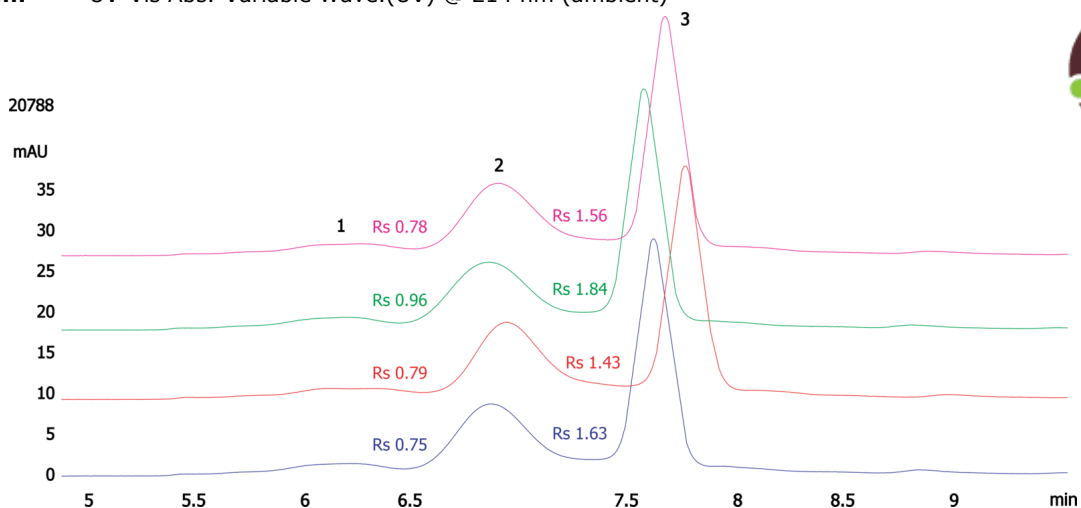
Flow Rate: 1 mL/min

Col. Temp.: ambient

Detection: UV-Vis Abs.-Variable Wave.(UV) @ 214 nm (ambient)



Products used in this application:



ANALYTES:

- 1** IgG dimer
Retention Time: 6.2 min
- 2** IgG
Retention Time: 6.9 min
- 3** BSA
Retention Time: 7.7 min

