

## Yarra 3µm SEC-3000 Zoom in MP Comparison: Ig-G + BSA

**Column:** Yarra™ 3 µm SEC-3000, LC Column 300 x 7.8 mm, Ea

**Dimensions:** 300 x 7.8 mm ID

**Order No:** 00H-4513-K0

**Elution Type:** Isocratic

**Eluent A:** xx Sodium Phosphate pH 6.8 see figure for details

Gradient Profile:	Step No.	Time (min)	Pct A
	1	0	100

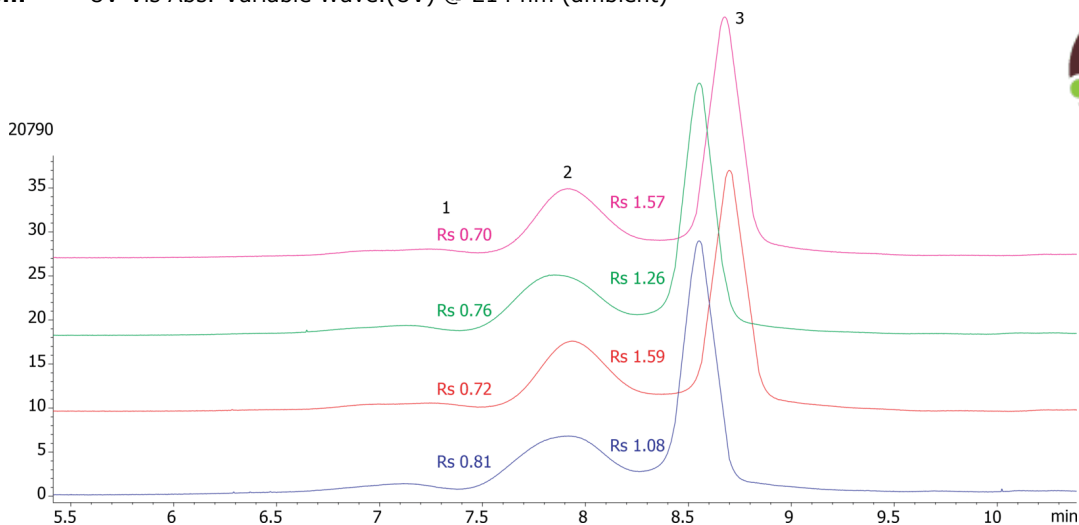
**Flow Rate:** 1 mL/min

**Col. Temp.:** ambient

**Detection:** UV-Vis Abs.-Variable Wave.(UV) @ 214 nm (ambient)



Products used in this application:



### ANALYTES:

- 1** IgG dimer  
Retention Time: 7.2 min
- 2** IgG  
Retention Time: 7.9 min
- 3** BSA  
Retention Time: 8.6 min

