

# HPLC Application

ID No.: 20791

## Bath salts analysis using Kinetex 2.6u C18 50x3.0mm

**Column:** Kinetex<sup>®</sup> 2.6 μm C18 100 Å, LC Column 50 x 3 mm, Ea

**Dimensions:** 50 x 3 mm ID

**Order No:** 00B-4462-Y0

**Elution Type:** Gradient

**Eluent A:** 10mM Ammonium formate

**Eluent B:** Methanol with 0.1% Formic acid

Gradient Profile:	Step No.	Time (min)	Pct A	Pct B
	1	0	95	5
	2	3	0	100
	3	4	0	100

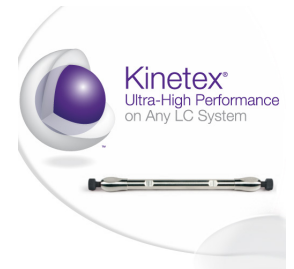
**Flow Rate:** 500 μL/min

**Col. Temp.:** ambient

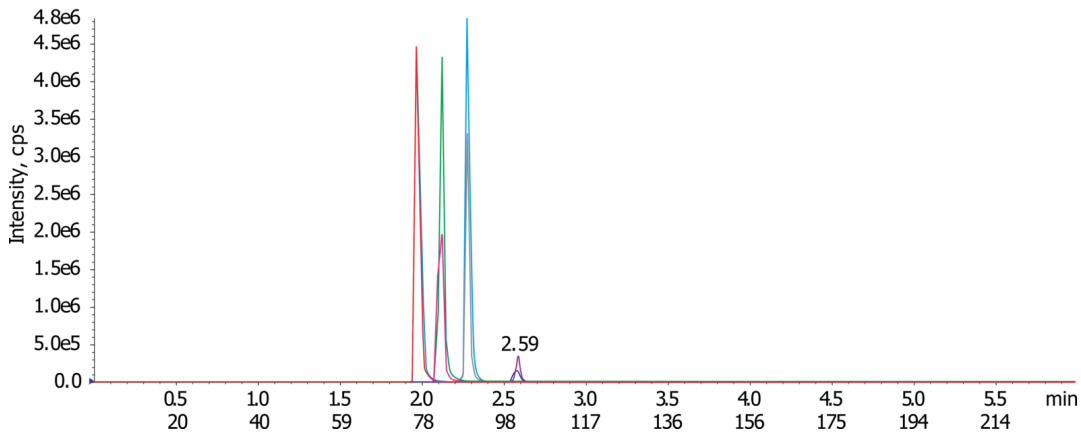
**Detection:** Tandem Mass Spec (MS-MS) @ (ambient)

**Detector Info:** <a target="\_blank"

20791



Products used in this application:



### ANALYTES:

- 1** Methylone  
Retention Time: 1.97 min
- 2** Methamphetamine  
Retention Time: 2.12 min
- 3** Mephedrone  
Retention Time: 2.28 min
- 4** MDPV  
Retention Time: 2.69 min