

HPLC Application

ID No.: 20800

Gingerol Standards using Kinetex 5u 50x4.6mm

Column: Kinetex[®] 5 μ m C18 100 Å, LC Column 50 x 4.6 mm, Ea

Dimensions: 50 x 4.6 mm ID

Order No: 00B-4601-E0

Elution Type: Gradient

Eluent A: MilliQ Water

Eluent B: Acetonitrile

Gradient Profile:	Step No.	Time (min)	Pct A	Pct B
	1	0	65	35
	2	0.5	65	35
	3	5	5	95
	4	5.5	5	95
	5	6	65	35
	6	7	65	35

Flow Rate: 2 mL/min

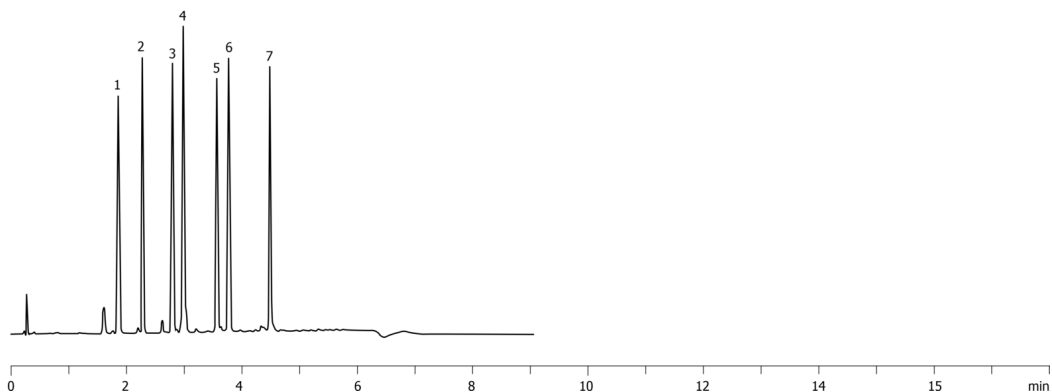
Col. Temp.: 30 °C

Detection: UV-Vis Abs.-Variable Wave.(UV) @ 282 nm (ambient)

20800



Products used in this application:



ANALYTES:

- 1 6-Gingerol
- 2 Capsaicin
- 3 8-Gingerol
- 4 6-Shogaol
- 5 10-Gingerol
- 6 8-Shogaol
- 7 10-Shogaol

