

## Gingerol in Ginger Liquid-Gel formulation using Kinetex 5u 50x4.6mm

**Column:** Kinetex® 5µm C18 100 Å, LC Column 50 x 4.6 mm, Ea

**Dimensions:** 50 x 4.6 mm ID

**Order No:** 00B-4601-E0

**Elution Type:** Gradient

**Eluent A:** MilliQ Water

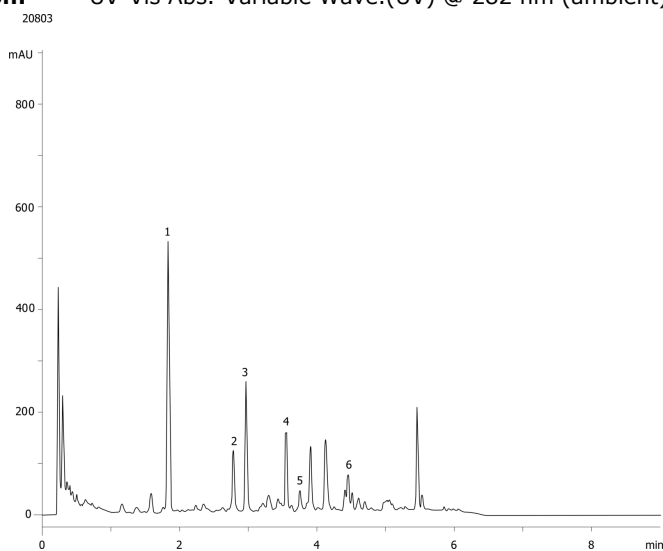
**Eluent B:** Acetonitrile

Gradient Profile:	Step No.	Time (min)	Pct A	Pct B
	1	0	65	35
	2	0.5	65	35
	3	5	5	95
	4	5.5	5	95
	5	6	65	35
	6	7	65	35

**Flow Rate:** 2 mL/min

**Col. Temp.:** 30 °C

**Detection:** UV-Vis Abs.-Variable Wave.(UV) @ 282 nm (ambient)



### ANALYTES:

- 1 6-Gingerol
- 2 Capsaisin
- 3 8-Gingerol
- 4 6-Shogaol
- 5 10-Gingerol
- 6 8-Shogaol
- 7 10-Shogaol



Products used in this application:

