

Gingerol in Ginger Powder-Capsule formulation using Kinetex 5u 50x4.6mm

Column: Kinetex® 5µm C18 100 Å, LC Column 50 x 4.6 mm, Ea

Dimensions: 50 x 4.6 mm ID

Order No: 00B-4601-E0

Elution Type: Gradient

Eluent A: MilliQ Water

Eluent B: Acetonitrile

| Gradient Profile: | Step No. | Time (min) | Pct A | Pct B |
|-------------------|----------|------------|-------|-------|
| | 1 | 0 | 65 | 35 |
| | 2 | 0.5 | 65 | 35 |
| | 3 | 5 | 5 | 95 |
| | 4 | 5.5 | 5 | 95 |
| | 5 | 6 | 65 | 35 |
| | 6 | 7 | 65 | 35 |

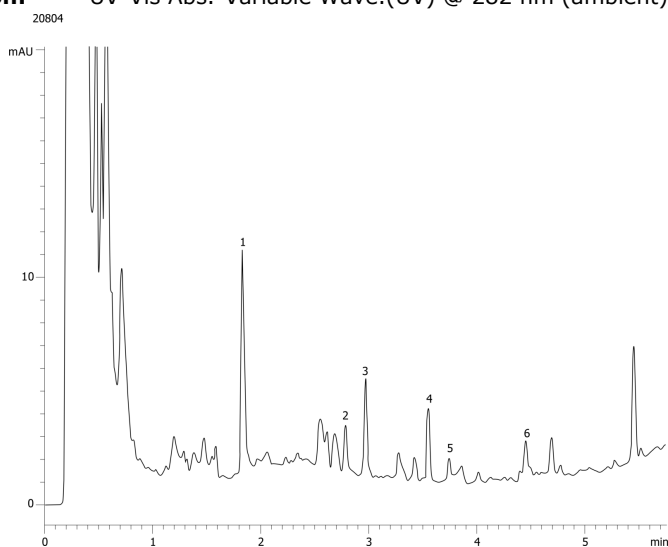
Flow Rate: 2 mL/min

Col. Temp.: 30 °C

Detection: UV-Vis Abs.-Variable Wave.(UV) @ 282 nm (ambient)



Products used in this application:



ANALYTES:

- 1 6-Gingerol
- 2 Capsaicin
- 3 8-Gingerol
- 4 6-Shogaol
- 5 10-Gingerol
- 6 8-Shogaol
- 7 10-Shogaol

