

# GC Application

ID No.: 20808

## Cannabinoids by GCMS on a ZB-Drug-1

**Column:** Zebron<sup>™</sup> ZB-Drug-1, GC Cap. Column 10 m x 0.18 mm x 0.18 µm, Ea

**Phase:** Proprietary Drug Phase

**Dimensions:** 10 meters x 0.18 mm x 0.18 µm

**Order No:** 7CD-G023-08

**Oven Profile:** 125°C for 1 minute to 320°C at 35°C for 1 minute

**Carrier Gas:** Constant Flow Helium, 1.2 mL/min

**Injection:** Splitless :1 1 µL @ 250°C

**Detection:** Mass Selective (MSD) (320°C)

**Analyst Note:** Sample is derivatized with BSTFA at 70°C for 30 minutes.

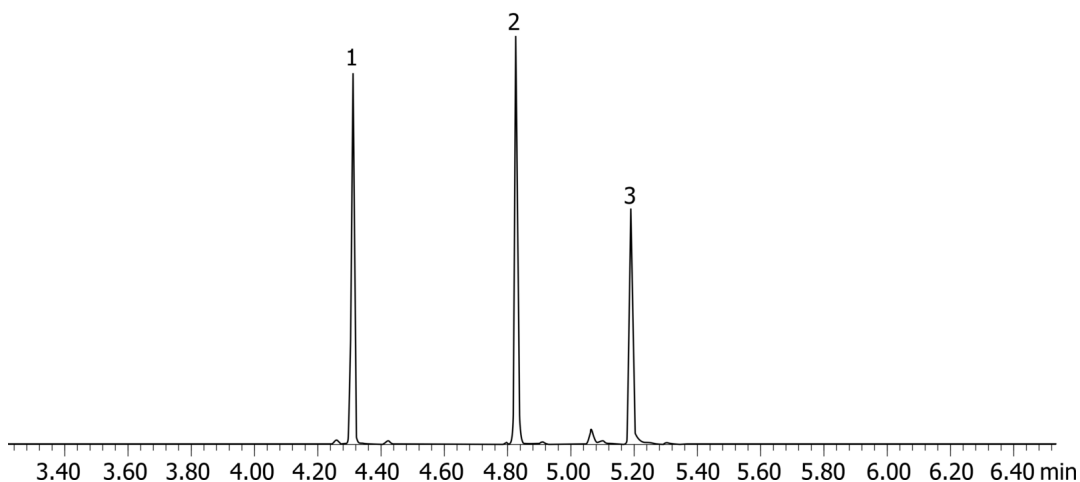
Sim mode: THC (371,473,488) THC-OH (371,459,474) THC-COOH (371,386)



Products used in this application:



20808



### ANALYTES:

- 1 THC-TMS
- 2 THC-OH-TMS
- 3 THC-COOH-TMS

