

## Cannabinoids and synthetic opiates by GCMS on a ZB-5MS

**Column:** Zebtron™ ZB-5MS, GC Cap. Column 20 m x 0.18 mm x 0.18 µm, Ea

**Phase:** 5% Phenyl-Arylene 95% Dimethylpolysiloxane

**Dimensions:** 20 meters x 0.18 mm x 0.18 µm

**Order No:** 7FD-G010-08

**Oven Profile:** 150°C for 1 min to 320°C at 35°C for 5 min

**Carrier Gas:** Constant Flow Helium, 1.2 mL/min

**Injection:** Splitless :1 1 µL @ 250°C

**Detection:** Mass Selective (MSD) (320°C)

**Analyst Note:** Sample is derivatized with BSTFA at 70°C for 30 minutes.

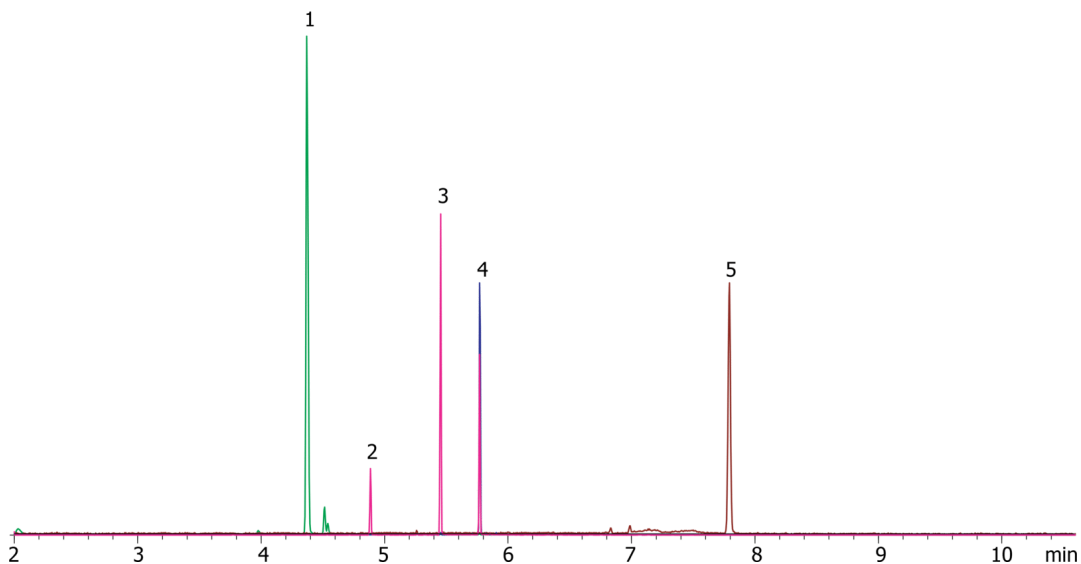
Sim mode: Methadone (294), THC (371), THC-OH (371), THC-COOH (473), Buprenorphine (450)



Products used in this application:



20810



### ANALYTES:

- 1 Methadone
- 2 THC
- 3 THC-OH
- 4 THC-COOH
- 5 Buprenorphine

