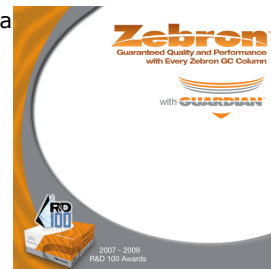
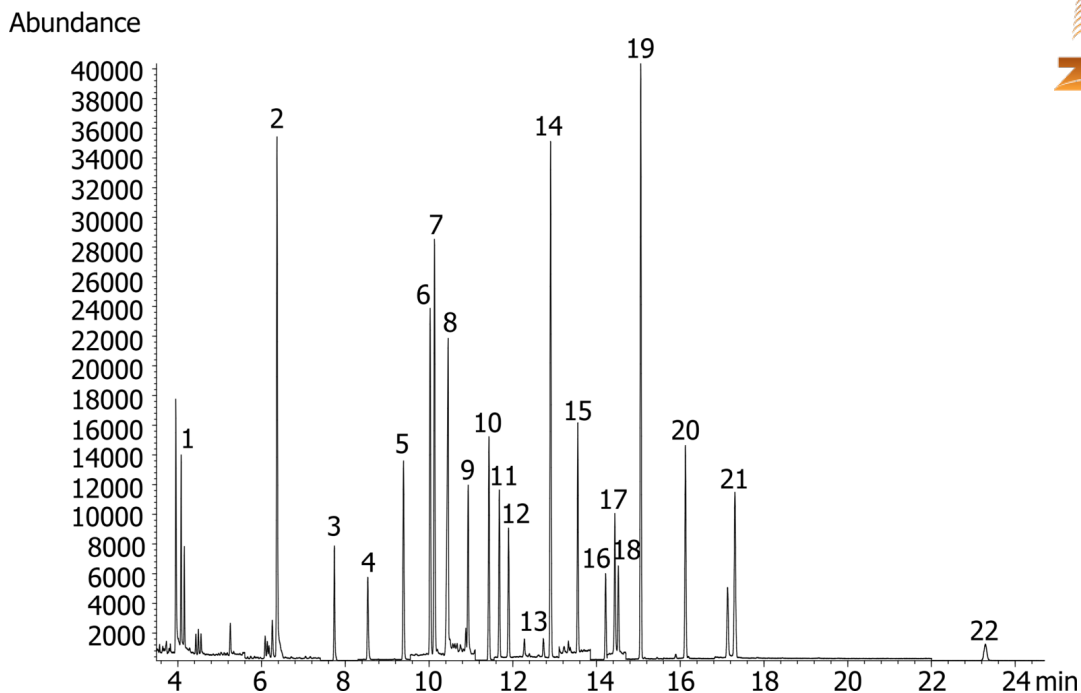


## Quechers [EN-GCMS] - Lettuce extract, ZB-5MSi 30x0.25x0.25mm

**Column:** Zebron™ ZB-5MSi w/GUARDIAN™, 5 m, GC Cap. Column 30 m x 0.25 mm x 0.25 µm, Ea  
**Phase:** 5% Phenyl 95% Dimethylpolysiloxane  
**Dimensions:** 30 meters x 0.25 mm x 0.25 µm  
**Order No:** 7HG-G018-11-GGA  
**Oven Profile:** Initial temp: 100 C  
Initial Hold Time: 0 min  
**Carrier Gas:** Constant Flow Helium, 1 mL/min  
**Injection:** Splitless :1 2 µL @ 250°C  
**Detection:** Mass Spectrometer (MS) (350°C)  
20824



Products used in this application:



## Quechers [EN-GCMS] - Lettuce extract, ZB-5MSi 30x0.25x0.25mm

### ANALYTES:

- 1 Dichlorvos
- 2 o-Phenylphenol
- 3 Trifluralin
- 4 alpha-HCH-d6
- 5 Atrazine
- 6 Chlorothalonil
- 7 Chlorpyrifos-methyl
- 8 Carbaryl
- 9 Parathion-d10
- 10 Chlorpyrifos
- 11 Cyprodinil
- 12 Tolyfluanid
- 13 Procymidone
- 14 o,p-DDD
- 15 Kresoxim-methyl
- 16 Ethion
- 17 Endosulfan sulfate
- 18 Tebuconazole
- 19 Triphenyl phosphate
- 20 Bifenthrin
- 21 L-Cyhalothrin
- 22 Permethrins
- 23 Azoxystrobin

