

HPLC Application

ID No.: 20829

Quechers(AOAC-LCMS) - Grapes extract using Luna 3u C18(2) 150x3.0mm

Column: Luna® 3 µm C18(2) 100 Å, LC Column 150 x 3 mm, Ea

Dimensions: 150 x 3 mm ID

Order No: 00F-4251-Y0

Elution Type: Gradient

Eluent A: 5mM Formic Acid (no pH adjustment)

Eluent B: Methanol with 5mM Formic Acid

Gradient Profile:	Step No.	Time (min)	Pct A	Pct B
	1	0	75	25
	2	15	10	90
	3	30	10	90
	4	30.01	75	25
	5	43	75	25



Products used in this application:



Flow Rate: 0.3 mL/min

Col. Temp.: ambient

Detection: Tandem Mass Spec (MS-MS) @ (ambient)

Detector Info: https://sciex.com/products/mass-spectrometers?utm_campaign=2019%20application%20search&utm_source=phenomenex&utm_medium=referral>SCIE
Parameter Table(Period 1 Experiment 1)

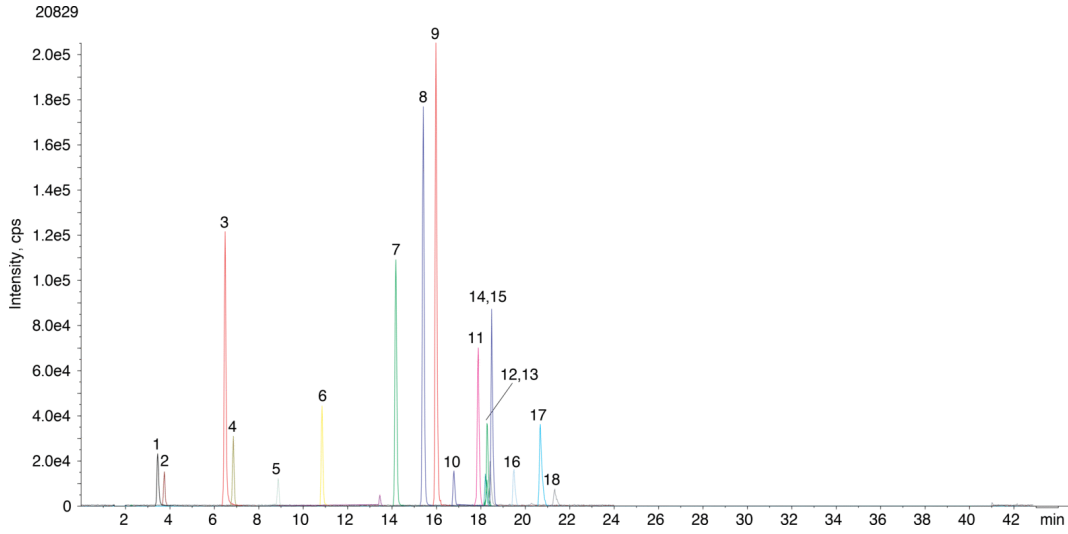
CAD:	5.00
CUR:	20.00
GS1:	55.00
GS2:	50.00
IS:	4000.00
TEM:	550.00
ihe:	ON
EP	10.00

mrm transitions and parameters

Analyte	Parent Q1	Daughter Q3	Dwell Time	DP	EP	CE	CXP
Atrazine	216	174	50	66	10	25	18
Azoxystrobin	404	372	50	51	10	19	10
Carbaryl	202	145	50	46	10	15	14
Chlorpyrifos	352	200	50	56	10	31	12
Chlorpyrifos-methyl	222	125	50	46	10	29	24
Cyprodinil	226	108	50	46	10	35	10
d10-Parathion	302	238	50	51	10	23	8
Dichlorvos	221	127	50	101	10	23	12
Ethion	385	199	50	41	10	15	14
Imazalil	297	159	50	66	10	29	16
Imidacloprid	256	209	50	46	10	21	20
Kresoxim-methyl	314	222	50	41	10	17	8
Linuron	249	160	50	56	10	35	16
Methamidophos	142	94	50	61	10	21	8
Methomyl	163	88	50	46	10	13	8
Pymetrozine	218	105	50	56	10	29	10
Tebuconazole	308	70	50	36	10	35	6
Thiabendazole	202	175	50	51	10	35	18
Tolyfluanid	347	238	50	46	10	13	8
Triphenylphosphat	227	77	50	106	10	47	8



Quechers(AOAC-LCMS) - Grapes extract using Luna 3u C18(2) 150x3.0mm



Quechers(AOAC-LCMS) - Grapes extract using Luna 3u C18(2) 150x3.0mm

ANALYTES:

- 1 Pymetrozine
- 2 Methamidophos
- 3 Thiabendazole
- 4 Methomyl
- 5 Imidacloprid
- 6 Imazalil
- 7 Carbaryl
- 8 Atrazine
- 9 Azoxystrobin
- 10 Linuron
- 11 Cyprodinil
- 12 Parathion-d10
- 13 Kresoxim-methyl
- 14 Triphenyl phosphate
- 15 Tebuconazole
- 16 Chlorpyrifos-methyl
- 17 Ethion
- 18 Chlorpyrifos

