

# HPLC Application

ID No.: 20833

## Chlorogenic Acid in Commercial Green Coffee Energy Drink using Kinetex 5u C18 100x4.6mm

**Column:** Kinetex<sup>®</sup> 5 $\mu$ m C18 100 Å, LC Column 100 x 4.6 mm, Ea

**Dimensions:** 100 x 4.6 mm ID

**Order No:** 00D-4601-E0

**Elution Type:** Gradient

**Eluent A:** 0.1% Formic Acid in MilliQ Water

**Eluent B:** Acetonitrile

Gradient Profile:	Step No.	Time (min)	Pct A	Pct B
	1	0	95	5
	2	10	80	20
	3	11	80	20
	4	11.5	95	5
	5	14	95	5

**Flow Rate:** 1.5 mL/min

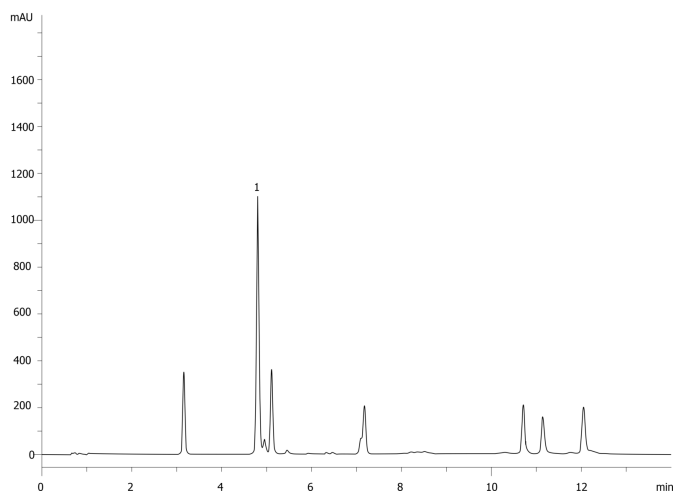
**Col. Temp.:** 25 °C

**Detection:** UV-Vis Abs.-Variable Wave.(UV) @ 330 nm (ambient)

20833



Products used in this application:



### ANALYTES:

- 1 Chlorogenic acid  
Retention Time: 4.802 min

