

HPLC Application

ID No.: 20834

Chlorogenic Acid in Brewed Black Coffee using Kinetex 5u C18 100x4.6mm

Column: Kinetex[®] 5 μ m C18 100 Å, LC Column 100 x 4.6 mm, Ea

Dimensions: 100 x 4.6 mm ID

Order No: 00D-4601-E0

Elution Type: Gradient

Eluent A: 0.1% Formic Acid in MilliQ Water

Eluent B: Acetonitrile

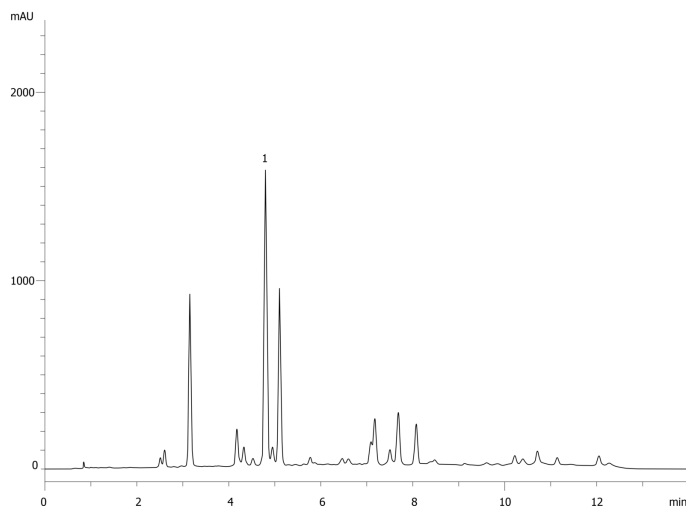
Gradient Profile:	Step No.	Time (min)	Pct A	Pct B
	1	0	95	5
	2	10	80	20
	3	11	80	20
	4	11.5	95	5
	5	14	95	5

Flow Rate: 1.5 mL/min

Col. Temp.: 30 °C

Detection: UV-Vis Abs.-Variable Wave.(UV) @ 330 nm (ambient)

20834



ANALYTES:

- 1** Chlorogenic acid
Retention Time: 4.706 min



Products used in this application:

