

HPLC Application

ID No.: 20838

Axia scaling using Kinetex 5u C18 100x21.2mm

Column: Kinetex[®] 5 μ m C18 100 Å, AXIA Packed LC Column 100 x 21.2 mm, Ea

Dimensions: 100 x 21.2 mm ID

Order No: 00D-4601-P0-AX

Elution Type: Gradient

Eluent A: Water with 0.1% TFA

Eluent B: Acetonitrile with 0.1% TFA

Gradient Profile:	Step No.	Time (min)	Pct A	Pct B
	1	0	97	3
	2	10	65	35

Flow Rate: 20 mL/min

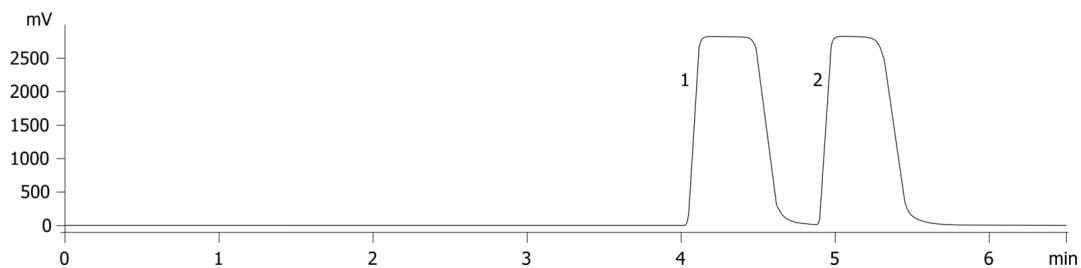
Col. Temp.: ambient

Detection: UV-Vis Abs.-Variable Wave.(UV) @ 254 nm (ambient)

20838



Products used in this application:



ANALYTES:

- 1 Caffeine
- 2 Theophylline

