

HPLC Application

ID No.: 20857

Synthetic cannabinoids using Kinetex 5µm C18 50x2.1mm

Column: Kinetex[®] 5µm C18 100 Å, LC Column 50 x 2.1 mm, Ea

Dimensions: 50 x 2.1 mm ID

Order No: 00B-4601-AN

Elution Type: Gradient

Eluent A: 10mM Ammonium formate

Eluent B: Acetonitrile

Gradient Profile:	Step No.	Time (min)	Pct A	Pct B
	1	0	80	20
	2	4	0	100

Flow Rate: 500 mL/min

Col. Temp.: ambient

Detection: Tandem Mass Spec (MS-MS) @ (ambient)

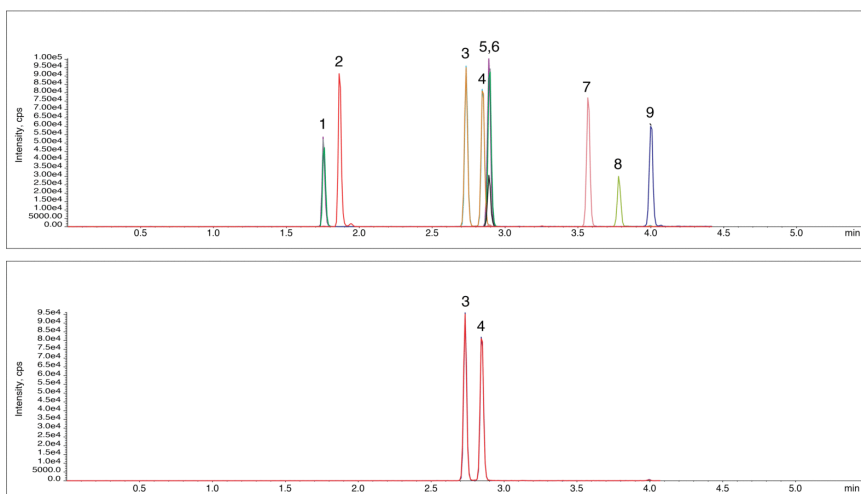
Detector Info: <a target="_blank"

20857

href="https://sciex.com/products/mass-spectrometers?utm_campaign=2019%20application%20search&utm_source=phenomenex&utm_medium=referral">SCIEX<



Products used in this application:



ANALYTES:

- 1 JWH073-BA
- 2 JWH-018-PA
- 3 JWH-073-4HB
- 4 JWH-073-3HB
- 5 AM2201-4OHP
- 6 JWH018-4HP
- 7 AM2201
- 8 JWH-073
- 9 JWH-018

