

HPLC Application

ID No.: 20878

Whole blood TDP (Vitamin B1) Spiked Standard 400 nmol/L on Gemini 5u C18 150x4.6mm

Column: Gemini[®] 5 μ m C18 110 \AA , LC Column 50 x 4.6 mm, Ea

Dimensions: 50 x 4.6 mm ID

Order No: 00B-4435-E0

Elution Type: Gradient

Eluent A: 25mM Na₂HPO₄, 10% Methanol, pH 7.0

Eluent B: 25mM Na₂HPO₄, 70% Methanol, pH 7.0

| Gradient Profile: | Step No. | Time (min) | Pct A | Pct B |
|-------------------|----------|------------|-------|-------|
| | 1 | 0 | 100 | 0 |
| | 2 | 1 | 87.5 | 12.5 |
| | 3 | 1.5 | 50 | 50 |
| | 4 | 2.5 | 10 | 90 |
| | 5 | 2.6 | 100 | 0 |
| | 6 | 4 | 100 | 0 |

Flow Rate: 1 mL/min

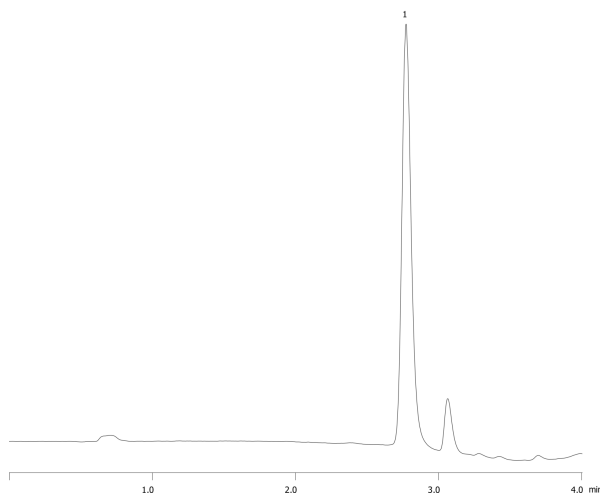
Col. Temp.: 25 °C

Detection: Fluorescence (FLUOR) @ Ex. 375 nm (ambient)

20878



Products used in this application:



ANALYTES:

1 Thymidine 5'-pyrophosphate

Retention Time: 2.773 min

