

# HPLC Application

ID No.: 20887

## Phthalates in Food and Beverage by LC/MS/MS

**Column:** Kinetex<sup>®</sup> 5 $\mu$ m C18 100 Å, LC Column 100 x 4.6 mm, Ea

**Dimensions:** 100 x 4.6 mm ID

**Order No:** 00D-4601-E0

**Elution Type:** Isocratic

**Eluent A:** Water with 10 mM Ammonium Acetate

**Eluent B:** Methanol

Gradient Profile:	Step No.	Time (min)	Pct A	Pct B
	1	0	100	0

**Flow Rate:** 500  $\mu$ L/min

**Col. Temp.:** ambient

**Detection:** Tandem Mass Spec (MS-MS) @ (ambient)

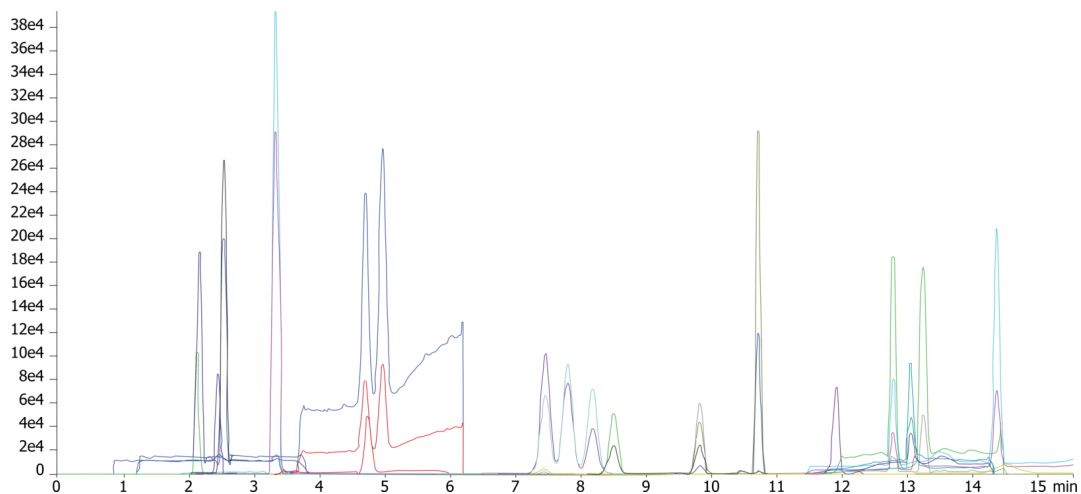
**Detector Info:**

20887

<a target="\_blank" href="https://sciex.com/products/mass-spectrometers?utm\_campaign=2019%20application%20search&utm\_source=phenomenex&utm\_medium=referral">SCIEX</a>



Products used in this application:



## Phthalates in Food and Beverage by LC/MS/MS

### ANALYTES:

- 1 Dimethyl phthalate
- 2 Diethyl phthalate
- 3 Diallyl phthalate
- 4 Dipropyl phthalate
- 5 Diisopropyl phthalate
- 6 Dibutyl phthalate
- 7 Diisobutyl phthalate
- 8 bis(2-Methoxyethyl)phthalate
- 9 Dipentyl phthalate
- 10 Diisopentyl phthalate
- 11 bis(2-Ethoxyethyl)phthalate
- 12 Benzyl butyl phthalate
- 13 Diphenyl phthalate
- 14 Dicyclohexyl phthalate
- 15 bis(4-methyl-2-pentyl)phthalate
- 16 Dihexyl phthalate
- 17 Di-n-heptyl phthalate
- 18 bis(2-n-Butoxyethyl)phthalate
- 19 bis(2-Ethylhexyl)phthalate
- 20 Di-n-octyl phthalate
- 21 Diisononyl ortho-phthalate
- 22 Diisodecyl ortho

