

Nitrofuran Metabolites in Meat, Shrimp, Liver and Honey by LC/MS/MS

Column: Luna® 3 µm C18(2) 100 Å, LC Column 150 x 2 mm, Ea

Dimensions: 150 x 2 mm ID

Order No: 00F-4251-B0

Elution Type: Gradient

Eluent A: Water with 1mM Ammonium Acetate

Eluent B: Methanol with 1mM Ammonium Acetate

| Gradient Profile: | Step No. | Time (min) | Pct A | Pct B |
|-------------------|----------|------------|-------|-------|
| | 1 | 0 | 90 | 10 |
| | 2 | 15 | 10 | 90 |
| | 3 | 19.5 | 10 | 90 |
| | 4 | 20 | 90 | 10 |

Flow Rate: 200 µL/min

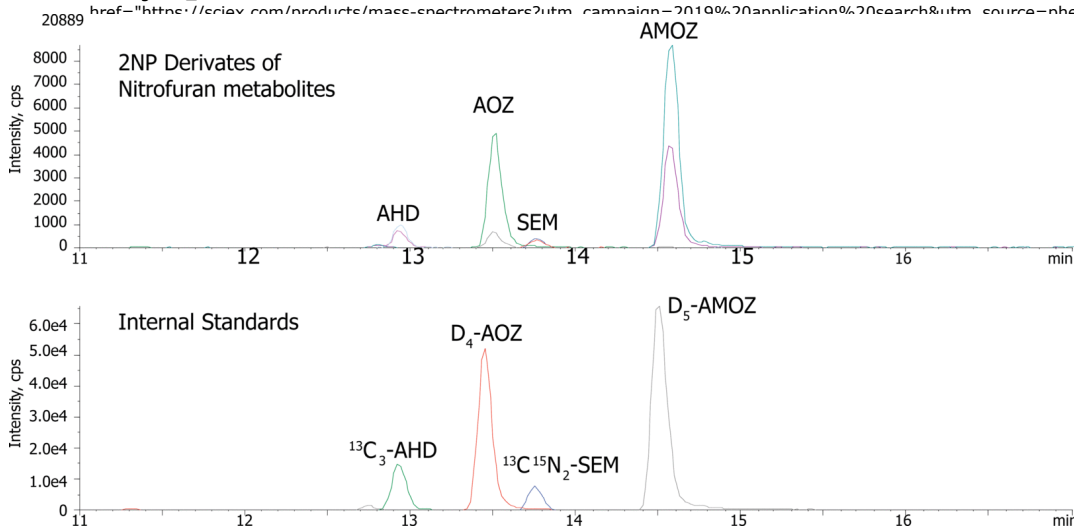
Col. Temp.: 25 °C

Detection: Tandem Mass Spec (MS-MS) @ (600 °C)

Detector Info: SCIEX



Products used in this application:



ANALYTES:

- 1** 3-Amino-2-oxazolidinone
Retention Time: 13.5 min
- 2** 3-Amino-5-morpholinomethyl-2-oxazolidinone
Retention Time: 14.6 min
- 3** Semicarbazide
Retention Time: 13.7 min
- 4** 1-Amino-hydantoin
Retention Time: 12.9 min

