

HPLC Application

ID No.: 20896

Melatonin in commercial formulation on Luna 5u C18(2) 150x4.6mm

Column: Luna® 5 µm C18(2) 100 Å, LC Column 150 x 4.6 mm, Ea

Dimensions: 150 x 4.6 mm ID

Order No: 00F-4252-E0

Elution Type: Isocratic

Eluent A: 0.25% Phosphoric Acid in Water

Eluent B: Acetonitrile

Gradient Profile:	Step No.	Time (min)	Pct A	Pct B
	1	15	80	20

Flow Rate: 1.5 mL/min

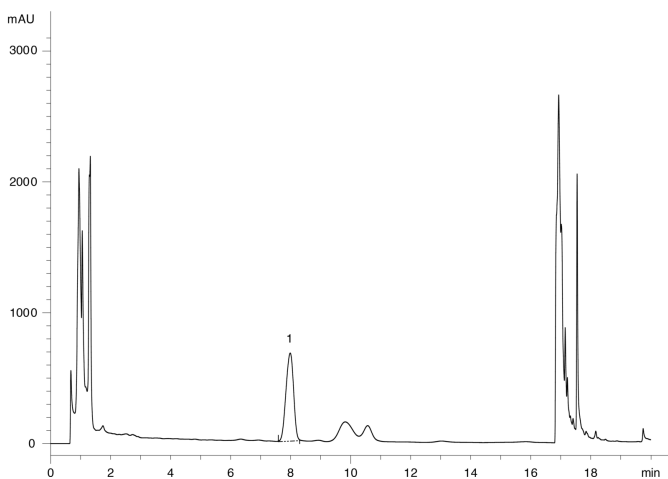
Col. Temp.: ambient

Detection: UV-Vis Abs.-Variable Wave.(UV) @ 225 nm (ambient)

20896



Products used in this application:



ANALYTES:

1 Melatonin

Retention Time: 7.985 min

