

Melatonin in commercial formulation on Kinetex 5u C18 50x4.6mm

Column: Kinetex® 5µm C18 100 Å, LC Column 50 x 4.6 mm, Ea

Dimensions: 50 x 4.6 mm ID

Order No: 00B-4601-E0

Elution Type: Gradient

Eluent A: 0.25% Phosphoric Acid in MilliQ Water

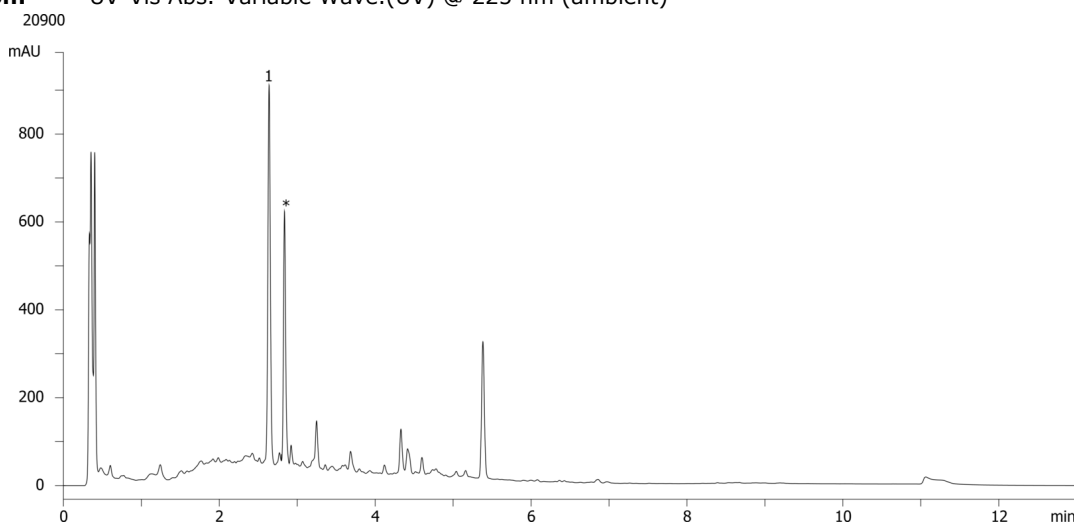
Eluent B: Acetonitrile

Gradient Profile:	Step No.	Time (min)	Pct A	Pct B
	1	0	90	10
	2	7	30	70
	3	8	10	90
	4	10	10	90
	5	10.1	90	10
	6	13	90	10

Flow Rate: 1.5 mL/min

Col. Temp.: 30 °C

Detection: UV-Vis Abs.-Variable Wave.(UV) @ 225 nm (ambient)



ANALYTES:

1 Melatonin

Retention Time: 2.638 min

2 Formulation impurity

Retention Time: 2.836 min



Products used in this application:

