

# HPLC Application

ID No.: 20901

## Quantification of Acrylamide in Food by LC/MS/MS

**Column:** Luna® 3 µm C18(2) 100 Å, LC Column 150 x 3 mm, Ea

**Dimensions:** 150 x 3 mm ID

**Order No:** 00F-4251-Y0

**Elution Type:** Gradient

**Eluent A:** Water with 0.001% Formic Acid

**Eluent B:** Methanol with 0.001% Formic Acid

Gradient Profile:	Step No.	Time (min)	Pct A	Pct B
	1	0	90	10
	2	10	100	0
	3	0	90	10

**Flow Rate:** 250 µL/min

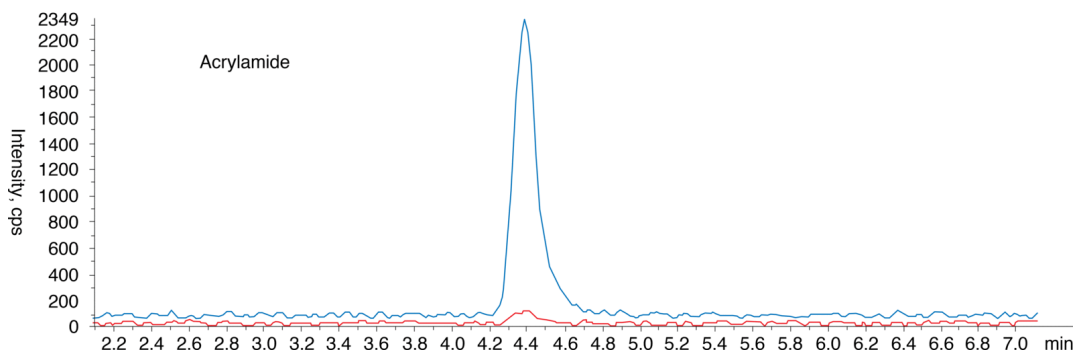
**Col. Temp.:** 60 °C

**Detection:** Tandem Mass Spec (MS-MS) @ (ambient)

**Detector Info:** <a target="\_blank" href="https://sciex.com/products/mass-spectrometers?utm\_campaign=2019%20application%20search&utm\_source=phenomenex&utm\_medium=referral">SCIEX</a>  
20901



Products used in this application:



### ANALYTES:

1 Acrylamide

Retention Time: 4.4 min

