

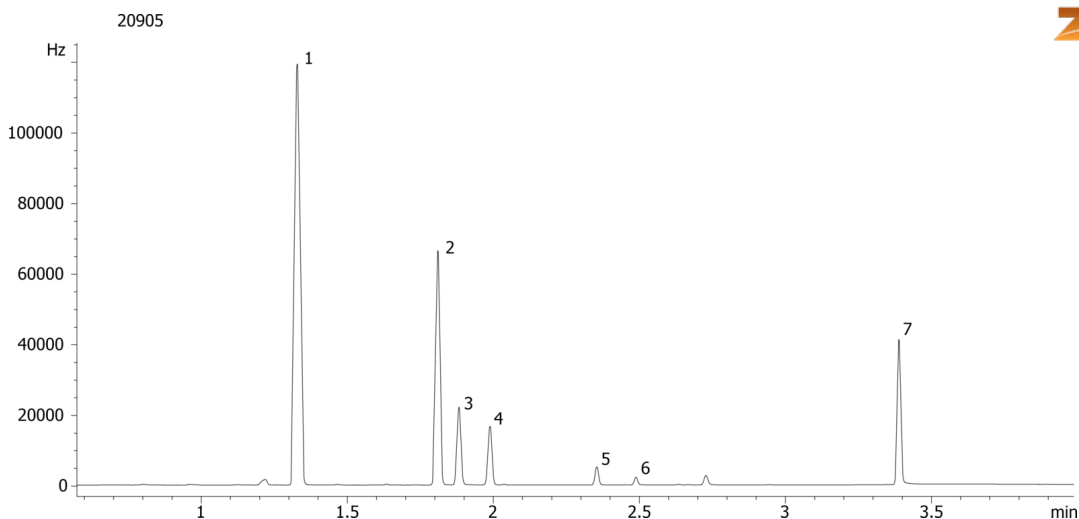
## EPA Method 504.1 on ZB-MultiResidue-2

**Column:** Zebtron™ ZB-MultiResidue™-2, GC Cap. Column 30 m x 0.32 mm x 0.25 µm, Ea  
**Phase:** Proprietary Pesticides Phase  
**Dimensions:** 30 meters x 0.32 mm x 0.25 µm  
**Order No:** 7HM-G017-11  
**Oven Profile:** 40 °C for 0.5 min to 180 °C @ 35 °C/min for 1 min

**Carrier Gas:** Constant Flow Helium, 7.5 mL/min  
**Injection:** Split 5:1 2 µL @ 222°C  
**Detection:** Electron Capture (ECD) (300°C)  
**Analyst Note:** Analytes 70 ppb in MTBE  
Liner: Double Taper Gooseneck (AG0-8173)  
Septum: PhenoRed GuideRight (AG0-7907)



Products used in this application:



### ANALYTES:

- 1 Bromodichloromethane
- 2 Chlorodibromomethane
- 3 Dibromomethane
- 4 1,1,1,2-Tetrachloroethane
- 5 Bromoform
- 6 1,2,3-Trichloropropane
- 7 1,2-Dibromo-3-chloropropane

