

# HPLC Application

ID No.: 20907

## Water-soluble Vitamins on Kinetex 2.6u, C18, 150x4.6 by HPLC (#20715)

**Column:** Kinetex<sup>®</sup> 2.6  $\mu$ m C18 100 Å, LC Column 150 x 4.6 mm, Ea

**Dimensions:** 150 x 4.6 mm ID

**Order No:** 00F-4462-E0

**Elution Type:** Gradient

**Eluent A:** 3g Sodium 1-hexanesulfonate monohydrate/0.4mL Triethylamine/15mL Acetic acid in 198

**Eluent B:** Methanol

Gradient Profile:	Step No.	Time (min)	Pct A	Pct B
	1	0	95	5
	2	12	53	47
	3	12.1	2	98
	4	15	2	98
	5	15.1	95	5
	6	22	95	5

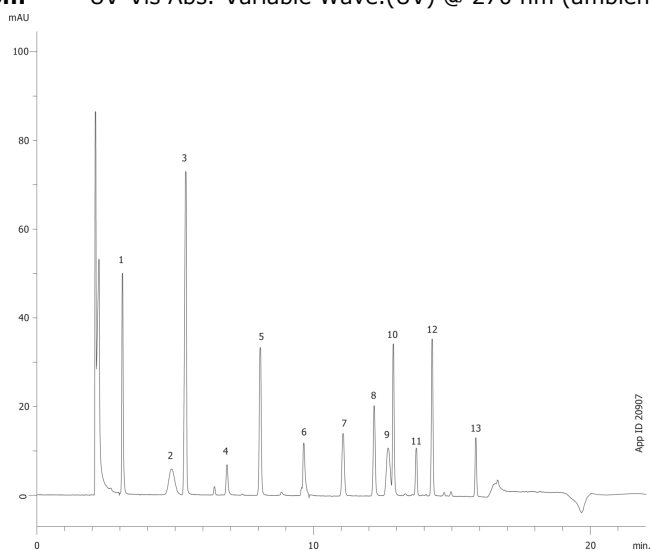
**Flow Rate:** 0.5 mL/min

**Col. Temp.:** 25 °C

**Detection:** UV-Vis Abs.-Variable Wave.(UV) @ 270 nm (ambient)



Products used in this application:



## Water-soluble Vitamins on Kinetex 2.6u, C18, 150x4.6 by HPLC (#20715)

### ANALYTES:

- 1 Ascorbic acid
- 2 Pyridoxal 5'-phosphate
- 3 Nicotinic acid
- 4 4-Pyridoxic acid
- 5 Nicotinamide
- 6 Riboflavin 5'-phosphate
- 7 Pyridoxal
- 8 Pyridoxine
- 9 Cobalamine
- 10 Folic acid
- 11 Pyridoxamine
- 12 Riboflavin
- 13 Thiamine

