

Azo Dyes by LC/MS/MS

Column: Luna® 5 µm C8 100 Å, LC Column 150 x 2 mm, Ea

Dimensions: 150 x 2 mm ID

Order No: 00F-4040-B0

Elution Type: Gradient

Eluent A: Water with 0.2 % Formic acid and 2 mM Ammonium formate

Eluent B: Water/Acetonitrile(10:90) with 0.2 % Formic acid and 2 mM Ammonium formate

| Gradient Profile: | Step No. | Time (min) | Pct A | Pct B |
|-------------------|----------|------------|-------|-------|
| | 1 | 0 | 80 | 20 |
| | 2 | 15 | 0 | 100 |
| | 3 | 29 | 0 | 100 |
| | 4 | 30 | 80 | 20 |

Flow Rate: 300 µL/min

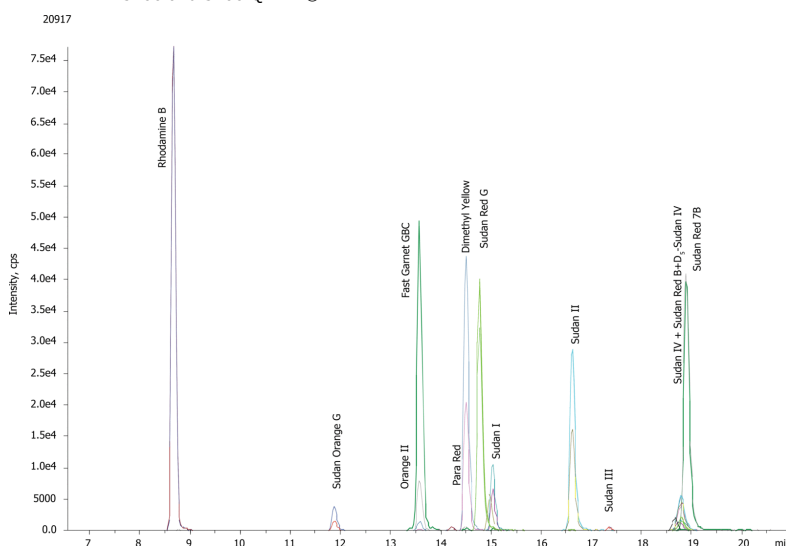
Col. Temp.: 30 °C

Detection: Tandem Mass Spec (MS-MS) @ (450 °C)

Detector Info: API 3200 and 3200 QTRAP®



Products used in this application:



Azo Dyes by LC/MS/MS

ANALYTES:

- 1 Rhodamine B
- 2 Sudan Orange G
- 3 Orange II
- 4 Orange II
- 5 Fast Garnet GBC
- 6 Para red
- 7 Dimethyl yellow
- 8 Sudan Red G
- 9 Sudan I-d5
- 10 Sudan I
- 11 Sudan II
- 12 Sudan III
- 13 Sudan IV-d5
- 14 Sudan IV
- 15 Sudan Red B
- 16 Sudan Red 7B

