

HPLC Application

ID No.: 20920

Human Plasma Vitamin C on Kinetex 5u XB-C18, 150x4.6mm (Spiked)

Column: Kinetex[®] 5 μ m XB-C18 100 Å, LC Column 150 x 4.6 mm, Ea

Dimensions: 150 x 4.6 mm ID

Order No: 00F-4605-E0

Elution Type: Gradient

Eluent A: 0.1% formic acid

Eluent B: Methanol 100%

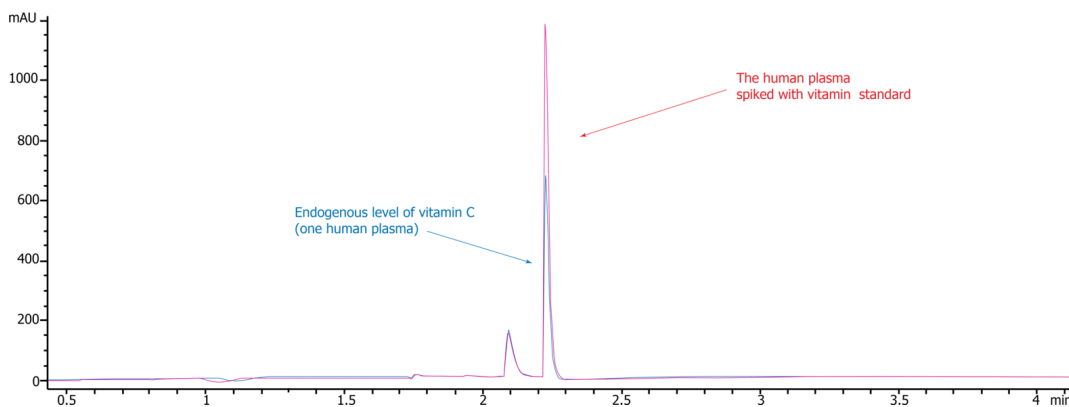
Gradient Profile:	Step No.	Time (min)	Pct A	Pct B
	1	0	100	0
	2	3.5	100	0
	3	3.6	0	100
	4	5	0	100
	5	5.1	100	0
	6	7	100	0

Flow Rate: 800 μ L/min

Col. Temp.: ambient

Detection: UV-Vis Abs.-Variable Wave.(UV) @ 245 nm (ambient)

20920



Products used in this application:



ANALYTES:

1 Vitamin C

Retention Time: 2.205 min



Sample Preparation Details

for HPLC Application ID No.: 20920

Human Plasma Vitamin C on Kinetex 5u XB-C18, 150x4.6mm (Spiked)

PRODUCT DESCRIPTION:

Impact™ Protein Precipitation, 2mL Square Well Filter Plate, 2/Pk

Order No.: CE0-7565

SOLID PHASE EXTRACTION (SPE) PROCEDURE:

Note: The solvent volumes shown below are for a Proprietary bed mass.

The solvent volumes will need to be adjusted for a smaller or larger bed mass.

Condition:

Load:

Wash:

Dry:

Elute:

Final Prep and Analysis:

Inject: 1 µL on HPLC UV-Vis Abs.-Variable Wave.(UV) @ 245 nm (ambient)

ANALYTES:	Spiked Conc. (ng/mL)	Log P	pKa	% Rec	%RSC (n=0)
1 Vitamin C	50				

Note: This method is designed as a convenient starting point for further investigation and can be tailored to meet your extraction goals. Call your local Phenomenex Representative for assistance in method development and optimization techniques.

©2024 Phenomenex Inc. All rights reserved.

For more information contact your Phenomenex Representative at support@phenomenex.com



Phenomenex products are available worldwide.

www.phenomenex.com

support@phenomenex.com