

## Alprenolol on Lux 5µm Cellulose-1 by SFC

**Column:** Lux® 5 µm Cellulose-1, LC Column 250 x 4.6 mm, Ea  
**Dimensions:** 250 x 4.6 mm ID  
**Order No:** 00G-4459-E0  
**Elution Type:** Isocratic  
**Eluent A:** CO<sub>2</sub>/(Methanol + 0.25% IPA + 0.25% TFA) 90:10 (v/v)  
**Gradient**

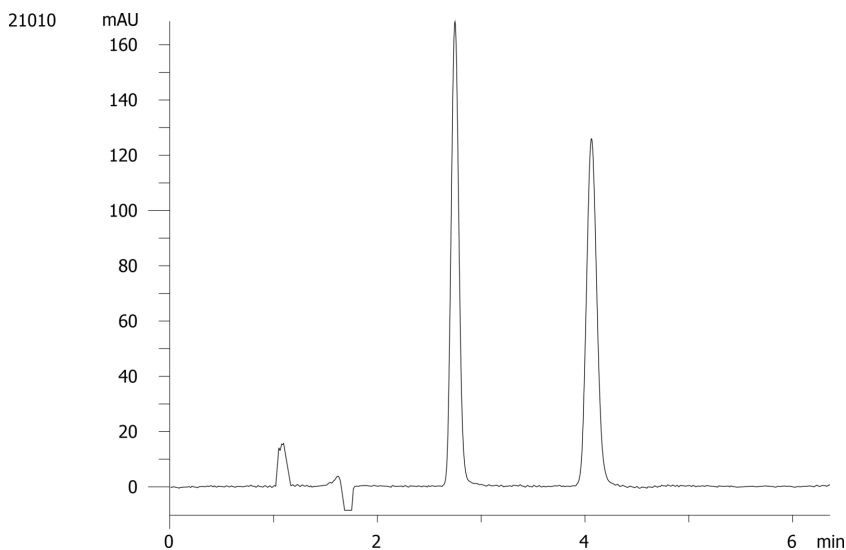
Step No.	Time (min)	Pct A
1	0	100

**Profile:**  
**Flow Rate:** 3 mL/min  
**Col. Temp.:** 30 °C  
**Detection:** UV-Vis Abs.-Diode Array (PDA) @ 220 nm (30 °C)  
**Analyst Note:** Courtesy of Katrijn De Klerck, Debby Mangelings and Yvan Vander Heyden, Department of Analytical Chemistry and Pharmaceutical Technology, Vrije Universiteit Brussel, Brussels, Belgium.  
Results of this analysis yielded: Alpha >1.1 and Resolution >1.5

SecurityGuard™ Guard Cartridge System extends column lifetime.

- SecurityGuard Cartridges, Lux Cellulose-1, 4 x 3.0mm ID, 10/Pk Part No.: AJ0-8403

- Holder Part No.: KJ0-4282



### ANALYTES:

- 1 Alprenolol
- 2 Alprenolol



Products used in this application:

