

# HPLC Application

ID No.: 21046

## Betaxolol on Lux 5µm Cellulose-4 by SFC

**Column:** Lux<sup>®</sup> 5 µm Cellulose-4, LC Column 250 x 4.6 mm, Ea

**Dimensions:** 250 x 4.6 mm ID

**Order No:** 00G-4491-E0

**Elution Type:** Isocratic

**Eluent A:** CO<sub>2</sub>/(Isopropanol + 0.5% IPA) 80:20 (v/v)

Gradient	Step No.	Time (min)	Pct A
<b>Profile:</b>	<b>1</b>	0	100

**Flow Rate:** 3 mL/min

**Col. Temp.:** 30 °C

**Detection:** UV-Vis Abs.-Diode Array (PDA) @ 220 nm (30 °C)

**Analyst Note:** Courtesy of Katrijn De Klerck, Debby Mangelings and Yvan Vander Heyden, Department of Analytical Chemistry and Pharmaceutical Technology, Vrije Universiteit Brussel, Brussels, Belgium.  
Results of this analysis yielded: Alpha >1.1 and Resolution >1.5

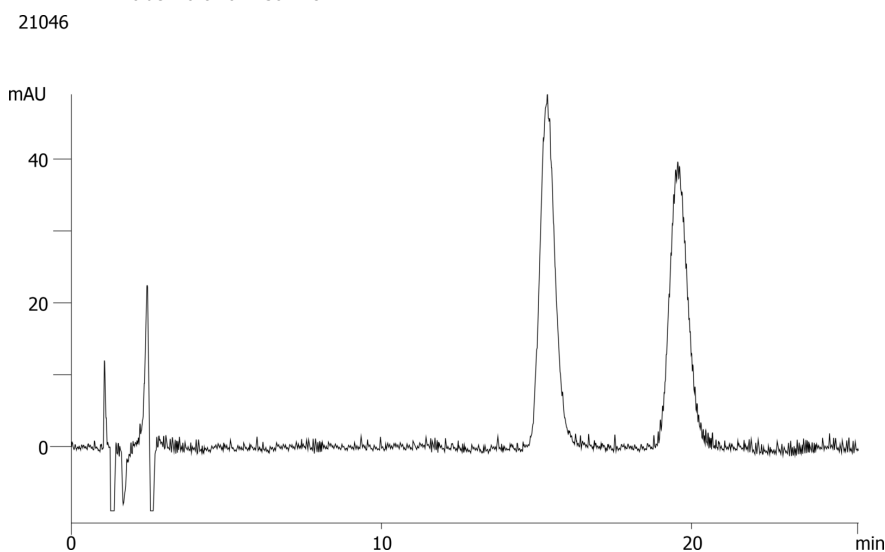
SecurityGuard<sup>™</sup> Guard Cartridge System extends column lifetime.

- SecurityGuard Cartridges, Lux Cellulose-4, 4 x 3.0mm ID, 10/Pk Part No.: AJ0-8627

- Holder Part No.: KJ0-4282



**Products used in this application:**



### ANALYTES:

1 Betaxolol

2 Betaxolol