

HPLC Application

ID No.: 21115

Ephedrine on Lux 5µm Cellulose-2 by SFC

Column: Lux[®] 5 µm Cellulose-2, LC Column 250 x 4.6 mm, Ea

Dimensions: 250 x 4.6 mm ID

Order No: 00G-4457-E0

Elution Type: Isocratic

Eluent A: CO₂/(Methanol + 0.5% IPA) 80:20 (v/v)

Gradient	Step No.	Time (min)	Pct A
Profile:	1	0	100

Flow Rate: 3 mL/min

Col. Temp.: 30 °C

Detection: UV-Vis Abs.-Diode Array (PDA) @ 220 nm (30 °C)

Analyst Note: Courtesy of Katrijn De Klerck, Debby Mangelings and Yvan Vander Heyden, Department of Analytical Chemistry and Pharmaceutical Technology, Vrije Universiteit Brussel, Brussels, Belgium.
Results of this analysis yielded: Alpha >1.1 and Resolution >1.5

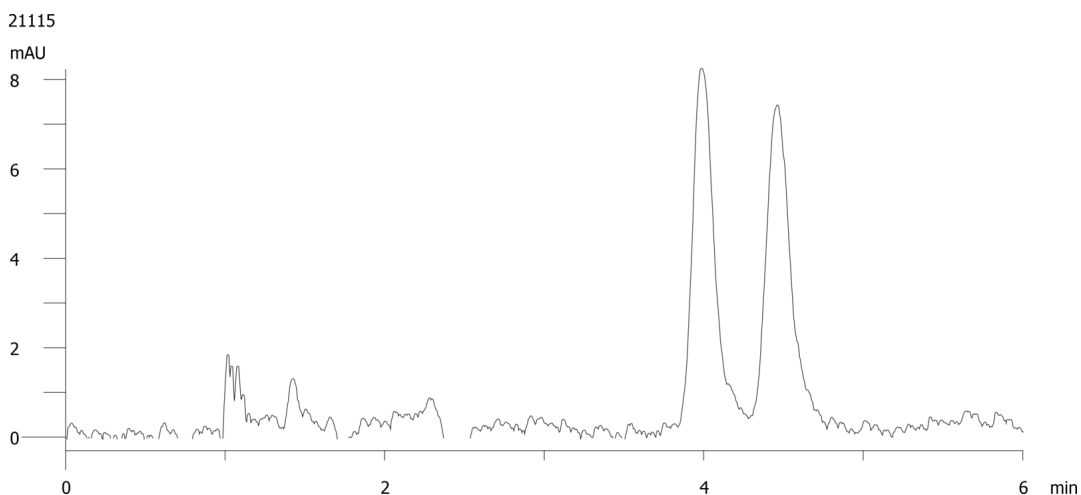
SecurityGuard[™] Guard Cartridge System extends column lifetime.

- SecurityGuard Cartridges, Lux Cellulose-2, 4 x 3.0mm ID, 10/Pk Part No.: AJ0-8366

- Holder Part No.: KJ0-4282



Products used in this application:



ANALYTES:

1 Ephedrine

2 Ephedrine

