

# HPLC Application

ID No.: 21279

## Nisoldipine on Lux 5µm Cellulose-4 by SFC

**Column:** Lux<sup>®</sup> 5 µm Cellulose-4, LC Column 250 x 4.6 mm, Ea

**Dimensions:** 250 x 4.6 mm ID

**Order No:** 00G-4491-E0

**Elution Type:** Isocratic

**Eluent A:** CO<sub>2</sub>/(Methanol + 0.1% IPA + 0.1% TFA) 80:20 (v/v)

| Gradient        | Step No. | Time (min) | Pct A |
|-----------------|----------|------------|-------|
| <b>Profile:</b> | <b>1</b> | 0          | 100   |

**Flow Rate:** 3 mL/min

**Col. Temp.:** 30 °C

**Detection:** UV-Vis Abs.-Diode Array (PDA) @ 220 nm (30 °C)

**Analyst Note:** Courtesy of Katrijn De Klerck, Debby Mangelings and Yvan Vander Heyden, Department of Analytical Chemistry and Pharmaceutical Technology, Vrije Universiteit Brussel, Brussels, Belgium.  
Results of this analysis yielded: Alpha >1.1 and Resolution >1.5

SecurityGuard<sup>™</sup> Guard Cartridge System extends column lifetime.

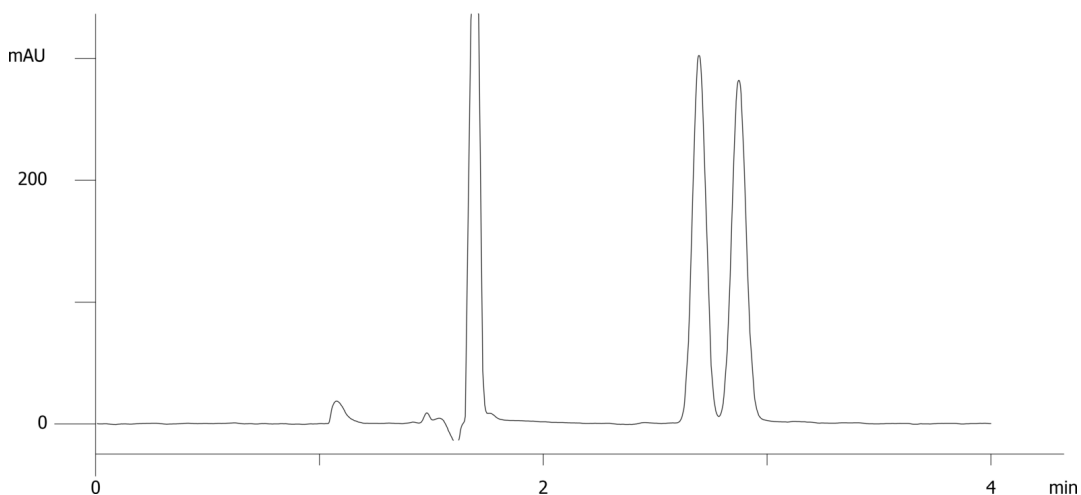
- SecurityGuard Cartridges, Lux Cellulose-4, 4 x 3.0mm ID, 10/Pk Part No.: AJ0-8627

- Holder Part No.: KJ0-4282

21279



**Products used in this application:**



### ANALYTES:

1 Nisoldipine

2 Nisoldipine

