

# HPLC Application

ID No.: 21366

## Sotalol on Lux 5µm Cellulose-4 by SFC

**Column:** Lux<sup>®</sup> 5 µm Cellulose-4, LC Column 250 x 4.6 mm, Ea  
**Dimensions:** 250 x 4.6 mm ID  
**Order No:** 00G-4491-E0  
**Elution Type:** Isocratic  
**Eluent A:** CO<sub>2</sub>/(Isopropanol + 0.1% IPA + 0.1% TFA) 80:20 (v/v)  
**Gradient**

Step No.	Time (min)	Pct A
1	0	100

**Flow Rate:** 3 mL/min  
**Col. Temp.:** 30 °C  
**Detection:** UV-Vis Abs.-Diode Array (PDA) @ 220 nm (30 °C)

**Analyst Note:** Courtesy of Katrijn De Klerck, Debby Mangelings and Yvan Vander Heyden, Department of Analytical Chemistry and Pharmaceutical Technology, Vrije Universiteit Brussel, Brussels, Belgium.  
Results of this analysis yielded: Alpha >1.1 and Resolution >1.5

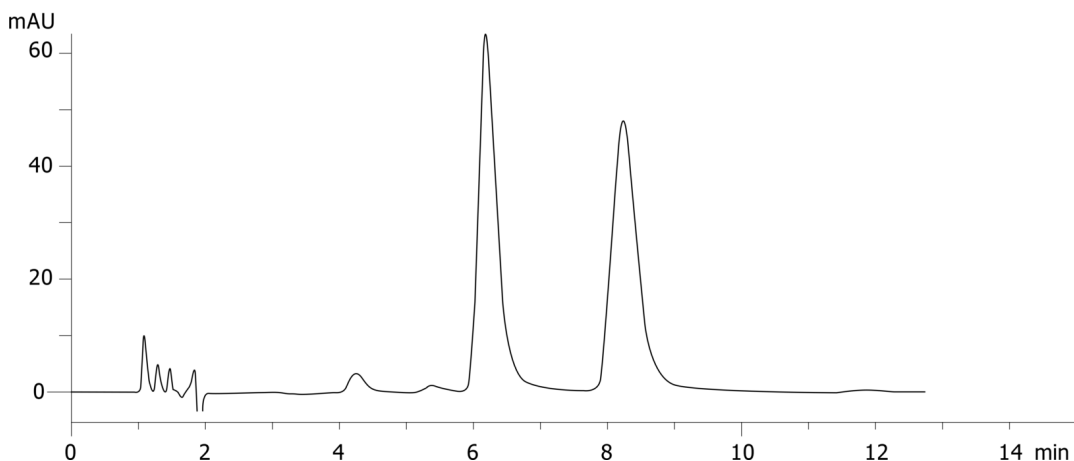
SecurityGuard<sup>™</sup> Guard Cartridge System extends column lifetime.  
- SecurityGuard Cartridges, Lux Cellulose-4, 4 x 3.0mm ID, 10/Pk Part No.: AJ0-8627  
- Holder Part No.: KJ0-4282



Products used in this application:



21366



### ANALYTES:

- 1 Sotalol
- 2 Sotalol