

Tertatolol on Lux 5µm Cellulose-1 by SFC

Column: Lux® 5 µm Cellulose-1, LC Column 250 x 4.6 mm, Ea
Dimensions: 250 x 4.6 mm ID
Order No: 00G-4459-E0
Elution Type: Isocratic
Eluent A: CO₂/(Methanol + 0.25% IPA + 0.25% TFA) 90:10 (v/v)
Gradient

Step No.	Time (min)	Pct A
1	0	100

Profile:
Flow Rate: 3 mL/min
Col. Temp.: 30 °C
Detection: UV-Vis Abs.-Diode Array (PDA) @ 220 nm (30 °C)
Analyst Note: Courtesy of Katrijn De Klerck, Debby Mangelings and Yvan Vander Heyden, Department of Analytical Chemistry and Pharmaceutical Technology, Vrije Universiteit Brussel, Brussels, Belgium.
Results of this analysis yielded: Alpha >1.1 and Resolution >1.5

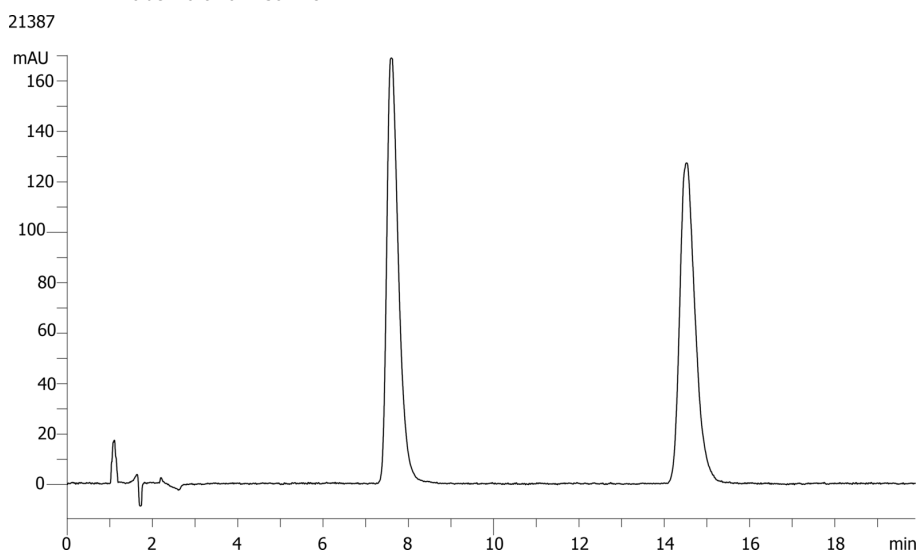
SecurityGuard™ Guard Cartridge System extends column lifetime.

- SecurityGuard Cartridges, Lux Cellulose-1, 4 x 3.0mm ID, 10/Pk Part No.: AJ0-8403

- Holder Part No.: KJ0-4282



Products used in this application:



ANALYTES:

- 1 Tertatolol
- 2 Tertatolol