

# HPLC Application

ID No.: 21428

## Vitamin C on Gemini 3u C18, 150x4.6mm (1000ug/mL)

**Column:** Gemini<sup>®</sup> 3 μm C18 110 Å, LC Column 150 x 4.6 mm, Ea

**Dimensions:** 150 x 4.6 mm ID

**Order No:** 00F-4439-E0

**Elution Type:** Gradient

**Eluent A:** 0.1% formic acid

**Eluent B:** Methanol 100%

<b>Gradient Profile:</b>	<b>Step No.</b>	<b>Time (min)</b>	<b>Pct A</b>	<b>Pct B</b>
	<b>1</b>	0	95	5
	<b>2</b>	5	20	80
	<b>3</b>	5.1	95	5
	<b>4</b>	8	95	5

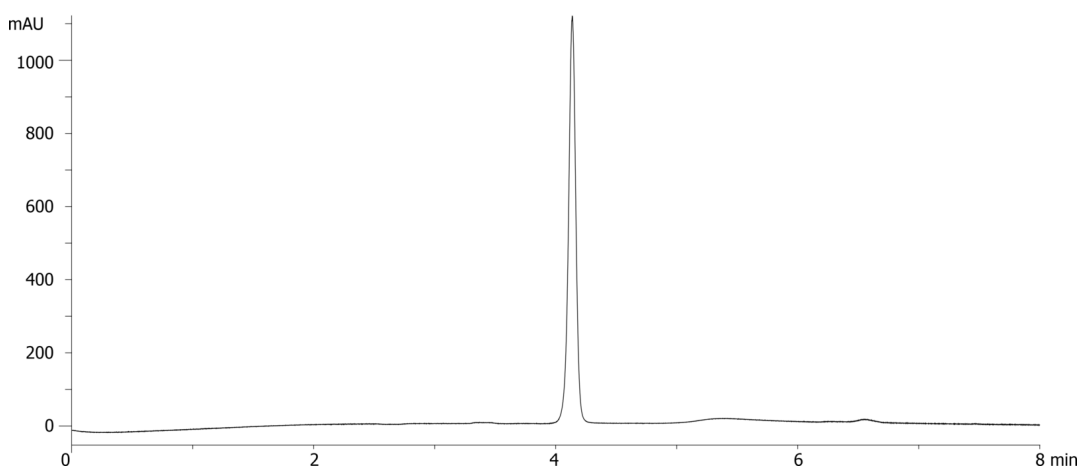
**Flow Rate:** 600 μL/min

**Col. Temp.:** ambient

**Detection:** UV-Vis Abs.-Variable Wave.(UV) @ 245 nm (ambient)  
21428



Products used in this application:



### ANALYTES:

**1** Vitamin C

Retention Time: 4.137 min

