

# HPLC Application

ID No.: 21452

## Analysis of crude peptide mixture on Kinetex 2.6u XB-C18 150x4.6mm

**Column:** Kinetex<sup>®</sup> 2.6  $\mu$ m XB-C18 100  $\text{\AA}$ , LC Column 150 x 4.6 mm, Ea

**Dimensions:** 150 x 4.6 mm ID

**Order No:** 00F-4496-E0

**Elution Type:** Gradient

**Eluent A:** Water with 0.1% TFA

**Eluent B:** Acetonitrile with 0.1% TFA

Gradient Profile:	Step No.	Time (min)	Pct A	Pct B
	1	0	85	15
	2	10	5	95

**Flow Rate:** 1 mL/min

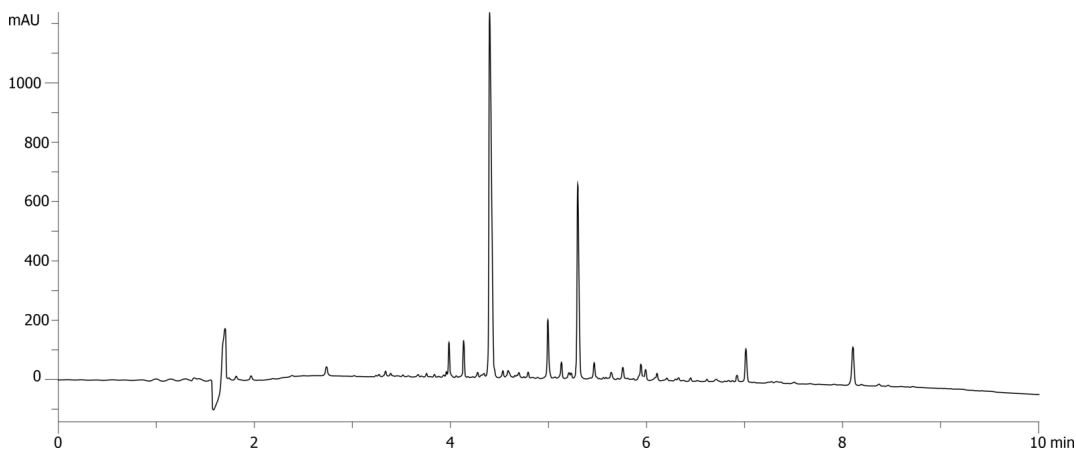
**Col. Temp.:** ambient

**Detection:** UV-Vis Abs.-Variable Wave.(UV) @ 210 nm (ambient)

21452



Products used in this application:



### ANALYTES:

- 1 Crude peptide mix

