

# HPLC Application

ID No.: 21453

## Overlay of fraction analysis chromatograms on Kinetex 2.6u XB-C18 150x4.6mm

**Column:** Kinetex<sup>®</sup> 2.6 μm XB-C18 100 Å, LC Column 150 x 4.6 mm, Ea

**Dimensions:** 150 x 4.6 mm ID

**Order No:** 00F-4496-E0

**Elution Type:** Gradient

**Eluent A:** Water with 0.1% TFA

**Eluent B:** Acetonitrile with 0.1% TFA

<b>Gradient Profile:</b>	<b>Step No.</b>	<b>Time (min)</b>	<b>Pct A</b>	<b>Pct B</b>
	<b>1</b>	0	85	15
	<b>2</b>	10	5	95

**Flow Rate:** 1 mL/min

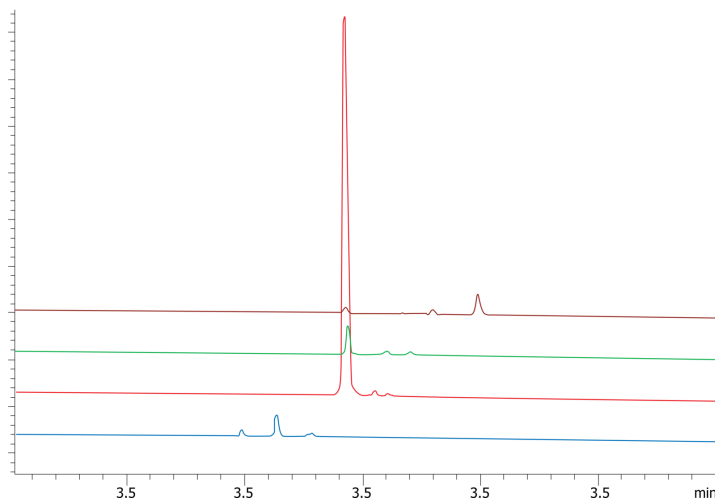
**Col. Temp.:** ambient

**Detection:** UV-Vis Abs.-Variable Wave.(UV) @ 210 nm (ambient)

21453



Products used in this application:



### ANALYTES:

- 1 Crude peptide mix

