

HPLC Application

ID No.: 21454

Preparative analysis of peptide sample using AXIA Kinetex 5u XB-C18 150x21.2mm

Column: Kinetex® 5µm XB-C18 100 Å, AXIA Packed LC Column 150 x 21.2 mm, Ea

Dimensions: 150 x 21.2 mm ID

Order No: 00F-4605-P0-AX

Elution Type: Gradient

Eluent A: Water with 0.1% TFA

Eluent B: Acetonitrile with 0.1% TFA

Gradient Profile:	Step No.	Time (min)	Pct A	Pct B
	1	0	85	15
	2	10	5	95

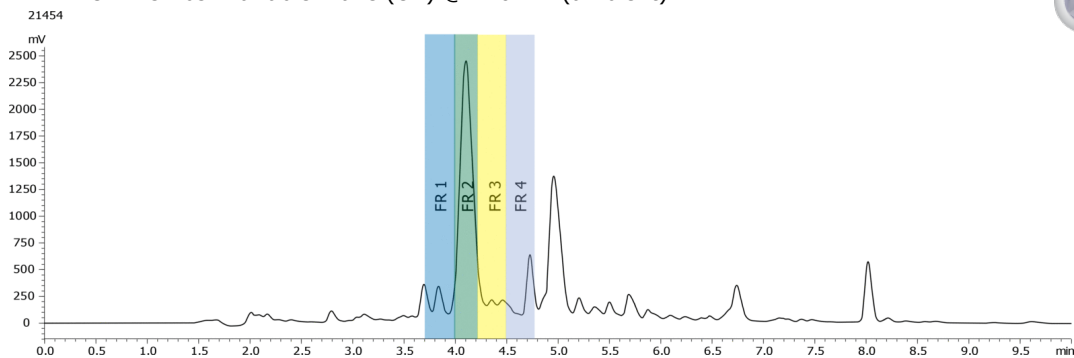
Flow Rate: 20 mL/min

Col. Temp.: ambient

Detection: UV-Vis Abs.-Variable Wave.(UV) @ 210 nm (ambient)



Products used in this application:



ANALYTES:

- 1 Crude peptide

