

## Kinetex 5u XB-C18 Axia Efficiency Comparison

**Column:** Kinetex® 5µm XB-C18 100 Å, AXIA Packed LC Column 150 x 21.2 mm, Ea

**Dimensions:** 150 x 21.2 mm ID

**Order No:** 00F-4605-P0-AX

**Elution Type:** Isocratic

**Eluent A:** Acetonitrile

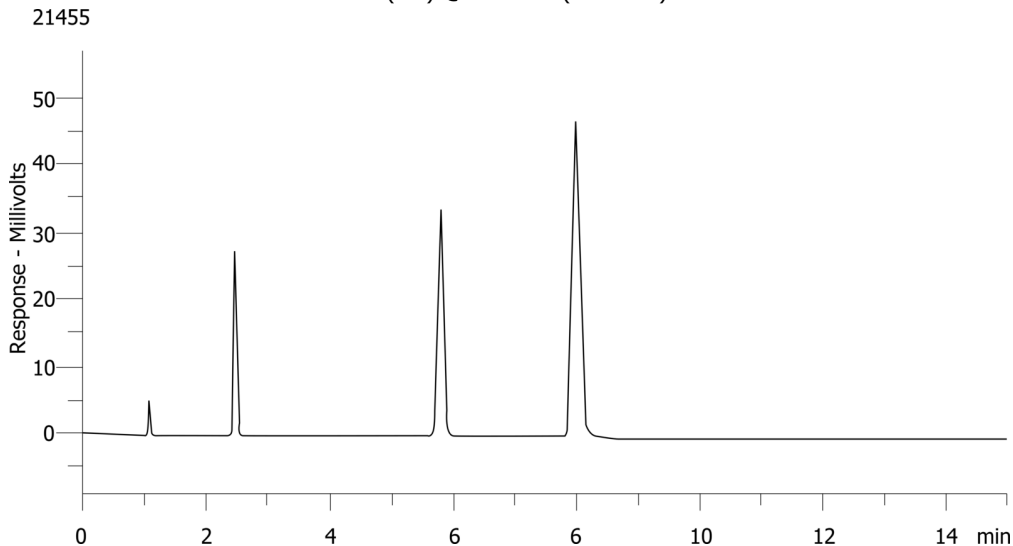
**Eluent B:** Water

Gradient Profile:	Step No.	Time (min)	Pct A	Pct B
	1	0	50	50

**Flow Rate:** 25 mL/min

**Col. Temp.:** ambient

**Detection:** UV-Vis Abs.-Variable Wave.(UV) @ 254 nm (ambient)



### ANALYTES:

- 1 Uracil
- 2 Acetophenone
- 3 Toluene
- 4 Naphthalene



Products used in this application:

