

# HPLC Application

ID No.: 21459

## Rapid analysis of BSA digest using Kinetex 1.3u C18 50x2.1mm

**Column:** Kinetex<sup>®</sup> 1.3  $\mu$ m C18 100  $\text{\AA}$ , LC Column 50 x 2.1mm, Ea

**Dimensions:** 50 x 2.1 mm ID

**Order No:** 00B-4515-AN

**Elution Type:** Gradient

**Eluent A:** Water with 0.1% TFA

**Eluent B:** Acetonitrile with 0.1% TFA

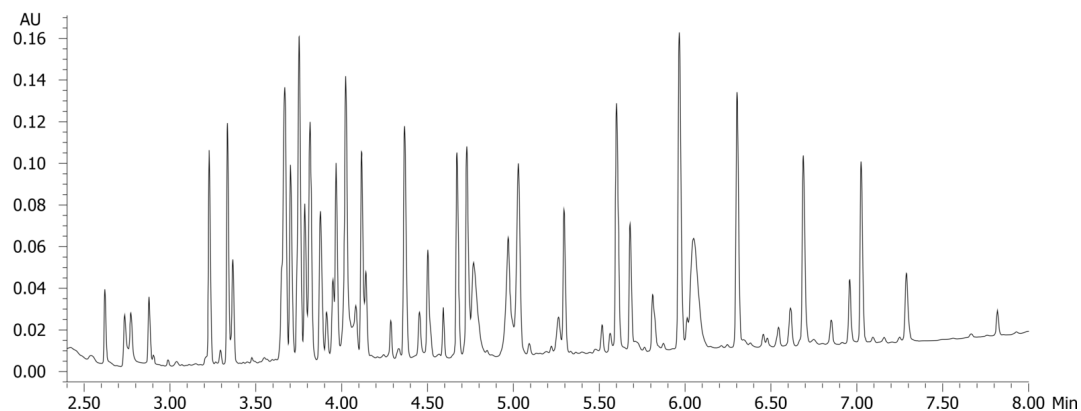
Gradient Profile:	Step No.	Time (min)	Pct A	Pct B
	1	0	95	5
	2	1	95	5
	3	11	5	95
	4	11.5	5	95
	5	11.6	95	5

**Flow Rate:** 0.5 mL/min

**Col. Temp.:** 30 °C

**Detection:** UV-Vis Abs.-Diode Array (PDA) @ 210 nm (ambient)

21459



Products used in this application:



### ANALYTES:

- 1 Bovine Serum Albumin (BSA)

